



# MISSOURI CHESS BULLETIN

MISSOURI CHESS ASSOCIATION

WWW.MOCHESS.ORG



CHESS CLUB  
AND SCHOLASTIC CENTER  
*of Saint Louis*

MISSOURI'S PREMIER

CHESS FACILITY

## Proud Host of the 2009 U.S. Championship



Volume 35 Number Four—Fall 2008 Issue  
*Serving Missouri Chess Since 1973*



# TABLE OF CONTENTS

Missouri Chess Bulletin

~Volume 35 Number 4 - Fall 2008~

---

<b>President's Podium/Notes from the Editor .....</b>	<b>Pg 3</b>
<b>What's New in Missouri Chess .....</b>	<b>Pg 4</b>
<b>Membership &amp; Subscription Information/Board Contacts .....</b>	<b>Pg 5</b>
<b>Distinguished Missouri Chess Players .....</b>	<b>Pg 6</b>
<b>Election Report .....</b>	<b>Pg 7</b>
<b>Opening the St. Louis Chess Club &amp; Scholastic Center .....</b>	<b>Pg 8-9</b>
~Steve Goldberg	
<b>News Release—US Championship &amp; Women's Championship.....</b>	<b>Pg 10-11</b>
<b>St. Louis Sweet Summer Swiss .....</b>	<b>Pg 12-13</b>
~Matt Angeli	
<b>Simul's at the CCSCSL.....</b>	<b>Pg 14</b>
<b>Missouri Open Report .....</b>	<b>Pg 15-18</b>
~Bob Howe & Thomas Rehmeier	
<b>Quick Chess in Saint Peters .....</b>	<b>Pg 19</b>
~Tim Nesham	
<b>A Year to Remember.....</b>	<b>Pg 20-21</b>
~Ron Luther	
<b>Highlights of Chess History, Part two .....</b>	<b>Pg 22-23</b>
~Bart Gibbons	
<b>Future Tournaments.....</b>	<b>Pg 24-25</b>
<b>Regional Chess Clubs .....</b>	<b>Pg 26</b>
<b>Missouri Chess Player Games Collection .....</b>	<b>Pg 27-29</b>
<b>Director's Meeting Summary .....</b>	<b>Pg 30</b>
<b>State Champions.....</b>	<b>Pg 31</b>
<b>Missouri Chess Hall of Fame.....</b>	<b>Back Cover</b>



The Missouri Chess Bulletin is the official publication of the Missouri Chess Association, a not-for-profit organization which promotes and supports chess in Missouri. The Missouri Chess Bulletin was founded in 1973 and is published quarterly. Unsolicited manuscripts and letters are welcome. All submissions become the property of the MCA and the MCA reserves the right to edit any and all material received for publication. Published opinions are those of contributors and do not necessarily reflect

- Missouri Chess Bulletin Layout and Design by Thomas R. Rehmeier -

# President's Podium...

My fellow chess players and enthusiasts, it brings me great pleasure to have the opportunity to share a few words with you in this Fall 2008 Issue of the Missouri Chess Bulletin. As this is my first term as President of the Missouri Chess Association, I would like to begin by sharing some of my plans and goals for the organization this year. First and foremost on my agenda is to see to it that the MCA becomes more than just a behind-the-scenes entity and is always omnipresent in chess throughout the State of Missouri doing everything in its power to improve the game for everyone. Secondly, the board is beginning an outreach plan to involve more scholastic players as they will be the future of the organization and the backbone for chess in Missouri for generations to come. Third, I hope to see through an event schedule that will have the MCA hosting tournaments across all parts of the state, from Joplin, to Rolla, Kirksville, etc. so that no chess player in Missouri will be without some sort of chess-playing opportunity. I feel it is important to involve as many players as possible so that we can have one of the best states in the union for chess. The Missouri chess owes a tremendous debt of gratitude to Mr. Rex Sinquefeld for his phenomenal generosity that has launched Saint Louis to the forefront of premier chess centers in the United States. I am confident that with some hard work and thorough planning we can put Missouri at the highest point on the chess map. You the member, you the chess player, and you the avid chess enthusiast make the MCA what it is and it is your continued support that allow the organization to function to its fullest to make Missouri a great state for chess. Please continue to submit articles, games, photographs, and other materials to this bulletin so that we can make the MCB an award-winning publication.



*Your continued support of the MCA and this bulletin is greatly appreciated. Thank you,*

Thomas R. Rehmeier  
President  
Missouri Chess Association



Greetings Missouri Chess Players!

I'm honored to feature the new Chess Club and Scholastic Center of St. Louis in this edition of the MCB.

The new chess club is a beautiful facility, which I'm sure will be providing many great stories and reports for this publication for many years to come. We've got a nice write-up by Steve Goldberg on the opening ceremony of the club, as well as a tournament from the opening event, the news releases of big events coming up, a schedule of club activities, and that's just the tip of the iceberg of what can be found going on there. Anyone who hasn't yet found a chance to visit the facility is strongly urged to do so. I promise you'll be impressed!

This edition concludes my first year as editor of the MCB. I hope you've enjoyed the changes and improvements we've tried to make over the last four editions. The job has been a pleasure and a challenge, and I look forward to putting together four great editions for you in 2009.

## From the Editor...

Thanks for your support  
of the MCB,

Bob Howe  
Editor



### Support The MCA!

Please check your MCA membership expiration date. If it will expire within a few months, renew today. We hope you appreciate the MCA and its website at [www.mochess.org](http://www.mochess.org). The printed MCB is sent to current Members for only \$12, and all other Members can view the MCB online at [www.mochess.org](http://www.mochess.org) for only \$5.

# What's New in Missouri Chess

WOW!!! The St. Louis Chess Club and Scholastic Center will be hosting the US Championship and Women's Championship in 2009! The strongest Grandmasters in America will gather in St. Louis to play in these prestigious closed events. See page 10 to read all the details of these exciting events.

The CCA, America's largest chess organizers, are returning to Missouri for the 2nd straight year. The Mid America Open is scheduled for March 13th-15th, 2009, and will include a three day, 40/2 SD/1 format, or an optional two day schedule with rounds 1 and 2 G/60. The event is expected to again bring Grandmasters and many titled players to Missouri.

Nathaniel Fast has taken over the membership chair duties of the Missouri Chess Association. Nathaniel's contact information is available on page 5 of this MCB and on the MCA website. He will be trying to fill the large shoes of Wayne Bartlett, who is leaving the post after serving as a combination of Board member and membership chair for the last few years. Wayne has decided to cut back his duties to allow more time for traveling. On behalf of the MCA directors, we would like to thank Wayne and wish him the best!



## **Congratulations to these winners of recent Missouri Tournaments:**

Stl Summer Swiss – Dan Roberts

July St. Peter's Quick – Renzo Herrera

August St. Peter's Quick – Henry Cao

Joplin Summer Open – Robert Talbot & Tyler Harris

August Last Sunday – Michael Kersulov

Stl Summer Swiss II – Nick Karlow

Howard Staunton Open – Ron Luther

Stl Summer Swiss III – Kevin Cao

Stl Classical Swiss – Richard Benjamin & John Boyer

Last Sunday of the Month – Michael Kersulov

## **Missouri Chess Festival:**

Invitational State Championship  
LM Ronald Luther

Missouri Open  
James Ellis (IA) & Jason Kasick (KS)  
Top MO: Bob Holliman & Nick Karlow

Missouri Open Reserve – Jialin Ding

MO Quick Championship – Jason Kasick

MO Blitz Championship – Ron Luther

MCA Scholastic – HS: R. Vanvalkenburg  
K-8: Vikram Arun      K-6 Rohit Rao & Samuel Stephens  
K-3 Nathan Phan

Bughouse – Jason Kasick & Tony Dutiel



*The Missouri Chess Association would like to congratulate Margaret Hua of Saint Louis for representing the United States of America at the 2008 World Youth Chess Championship in Vung Tau, Vietnam.*



# Membership & Subscriptions

A one-year membership in the Missouri Chess Association includes a subscription to the quarterly *Missouri Chess Bulletin* chess publication, available in electronic or hard-copy, as well as eligibility to play in MCA-sponsored tournaments, including State Championship titled events.

<u>MEMBERSHIP OPTIONS</u>	<u>COST (1 YR)</u>
<b>Regular</b> <i>Ages 25+; Includes hard-copy MCB.</i>	\$12.00
<b>Scholastic</b> <i>Under 25; Includes hard-copy MCB.</i>	\$8.00
<b>Electronic (Economy)</b> <i>Provides online MCB access. **Email address required.</i>	\$5.00
<b>Family</b> <i>2 Adults &amp; children under 25 Provides one hard-copy MCB.</i>	\$18.00
<b>Scholastic Family</b> <i>All children under 25.</i>	\$12.00

If you would like to join the MCA, please fill out a membership form (*available at [mochess.org](http://mochess.org)*) and mail it along with dues to the MCA Membership Coordinator:

**Nathaniel Fast**  
**630 Broadway**  
**Jefferson City, MO 65101**  
<[nathanielfast@yahoo.com](mailto:nathanielfast@yahoo.com)>

Be sure to include your E-mail address to receive tournament announcements and notices when the new issue of the MCB is released. For more information on joining the MCA, please visit <http://www.mochess.org/> and click the 'Join Us' link.

## MCA BOARD OF DIRECTORS & OFFICERS 2008-2009

### REGION 1—SAINT LOUIS

**Edward C. Baur:** 7138 Lindenwood, St. Louis, MO 63109. 314-645-2897.

<[ecbaur@gmail.com](mailto:ecbaur@gmail.com)>

**John F. Wiedner (Secretary):** 12545 Olive Blvd. #254, Creve Coeur, MO 63141. 314-952-4183.

<[jfwiedner@medsys.net](mailto:jfwiedner@medsys.net)>

**William H. Wright (Treasurer):** 449 W Jefferson Ave. Apt B, St. Louis, MO 63122. 314-822-5334.

<[chesswright@charter.net](mailto:chesswright@charter.net)>

### REGION 2—KANSAS CITY

**Bob Holliman:** P.O. Box 1871, Independence, MO 64055. 816-836-0568.

<[chess\\_entries@comcast.net](mailto:chess_entries@comcast.net)>

**Ronald Luther:** 5205 Country Side Lane, Blue Springs, MO 64015.

816-769-9576. <[kcmaster@sbcglobal.com](mailto:kcmaster@sbcglobal.com)>

**John Sutton (Vice President),** 3608 Randall Drive, Independence, MO 64055.

816-478-3946. <[jsutton@indep.k12.mo.us](mailto:jsutton@indep.k12.mo.us)>

### REGION 3—REST OF STATE

**Timothy V. Campbell:** 6104 E. Sharon Lane, Columbia, MO 65202. 573-696-0082.

<[TRJCamp@aol.com](mailto:TRJCamp@aol.com)>

**Bob Howe:** 4403 Gage Place, Columbia, MO 65203. 573-445-5458.

<[bdhowe@yahoo.com](mailto:bdhowe@yahoo.com)>

**Thomas R. Rehmeier (President):** 5217 Denice Street, Jefferson City, MO 65109. 573-291-0852.

<[T.Rehmeier@yahoo.com](mailto:T.Rehmeier@yahoo.com)>



## MISSOURI PLAYERS ON THE USCF TOP 100 LISTS

<b>Overall</b>		
85	IM Michael A. Brooks	(2423)
<b>Correspondence</b>		
19	Robert Merton Jacobs	(2395)
40	Laurence Anderson	(2307)
74	Harry Ingersol	(2239)
93	Barry Wood Walker	(2203)
<b>Over 65</b>		
45	Robert Merton Jacobs	(2106)
<b>Under 21</b>		
59	Thomas G. Gossell	(2218)
<b>Age 17</b>		
54	Nick W. Karlow	(1937)
73	Frank H. Smith	(1843)
<b>Age 16</b>		
30	Kevin Guo	(2001)
57	Brad Schlosser	(1855)
<b>Age 15</b>		
62	Henry Cao	(1830)
<b>Age 12</b>		
73	Isaiah Gadson	(1642)
<b>Age 11</b>		
11	Kevin Y. Cao	(1896)
36	William M. Tong	(1701)
55	Jialin Ding	(1601)
<b>Age 10</b>		
58	Margaret M. Hua	(1495)
<b>Girls Under 13</b>		
31	Margaret M. Hua	(1495)
51	Joanna Gossell	(1315)

USCF August Top 100 List

## TITLED MISSOURI PLAYERS

Michael A. Brooks	International Master
Robert M. Jacobs	Correspondence IM
Bart F. Gibbons	Correspondence IM

## MISSOURI'S TOP 50 PLAYERS

1	IM Michael A Brooks	2423
2	Charles Lawton	2358
3	Bart F Gibbons	2256
4	Kenneth E Jones	2232
5	Loal W Davis	2227
6	Thomas G Gossell	2218
7	Ronald G Luther	2211
8	Andrew J Witte	2158
9	Tomislav Juricic	2144
10	James F McLaughlin	2132
11	James R Voelker	2120
12	Rich Jackson	2108
13	Bob Holliman	2101
14	Robert Merton Jacobs	2100
15	Kenneth P Thomas	2098
16	Pranav Akolkar	2075
17	Richard Wagner	2060
18	Aaron S Dubin	2059
19	Waldo Odak	2052
20	Steve Saidi	2041
21	Zebedee Fortman III	2040
22	Gary Michael White	2029
23	Jeremy M Volkmann	2022
24	Joshua Frank	2007
25	Paul W Cornelison	2003
26	Kevin Guo	2001
27	James A Davies	2000
28	Kevin Dale Johnson	2000
29	Daniel R Huff	1994
30	Benjamin M Gradsky	1985
31	Kevin Y Cao	1979
32	Nick W Karlow	1974
33	Jeffery Van Order	1956
34	Selden Trimble	1947
35	Nathaniel Fast	1947
36	Zebedee Forman, Jr	1923
37	Karl Cosner	1918
38	Darius Masuhud	1917
39	Mark T Smith	1907
40	Daniel A Juengel	1902
41	Adil Skuka	1900
42	Nathanael Swinger	1898
43	Renzo Herrera	1892
44	Kenneth E Fee, Jr	1880
45	Joseph Anton Garnier	1875
46	Robert Taras	1858
47	Brad Schlosser	1855
48	Raymond J Birt	1845
49	Mark A Cogley	1840
50	Albert Howlett	1838

Sept 2008: \*Active in the last 3 years.

## MISSOURI CHESS HALL OF FAME

James A. Davies (2000)  
 Donald Oswald\* (2001)  
 Robert Merton Jacobs (2002)  
 Michael A. Brooks (2003)  
 Robert Steinmeyer\* (2006)

\*Awarded Posthumously

*Nominations for the Hall of Fame are due to the Secretary by June 15, for each nomination year. Please include a short biography and a description of the nominee's significant contributions to chess in the state of Missouri. The Inductee(s) will be announced at the Missouri Open.*

# BOARD OF DIRECTORS ELECTION

~ James A. Davies ~  
MCA Election Commissioner

July 13, 2008—Missouri Chess Association - Election Commissioner Report

Gentlemen:

Ballots were counted at the Delmar Loop Chess Club on Thursday, July 10. The process was witnessed by Orlandus Parker and Bill Wright, who kept separate tallies. Enclosed for your inspection are a list of members who voted. Photocopies of the tally sheets are also enclosed for the Secretary.

## **Region 1 : 18 MCA members cast ballots.**

Winners :	William H. Wright	14	Others receiving votes :	Tim Nesham	5
	Edward Baur	13		Matt Angeli	4
	John Wiedner	7		Ray Kurczynski	1

## **Region 2 : 8 MCA members cast ballots.**

Winners :	Ron Luther	8	Others receiving votes :	Joe Conklin	2
	Bob Holliman	7			
	John Sutton	7			

## **Region 3 : 13 MCA members cast ballots.**

Winners :	Bob Howe	9	Others receiving votes :	Byron Williamson	3
	Thomas Rehmeier	8		Daniel Breon	3
	Tim Campbell	7 #		Michael Kersulov	1
	Mike Clark	7 #		Max Benecke	1

#—tie vote, winner to be determined by the Board according to the bylaws.

***\*\*On July 22, 2008, the following letter was sent to the board officially breaking the Region 3 tie.***

Dear Members of the Board:

The election results report released by James Davis, MCA Election Commissioner, gives the following results for Missouri Chess Association, Region 3 Board of Directors Election: <ABOVE RESULTS LISTED>

As reported by Mr. Davies there is a tie between Mr. Tim Campbell and Mr. Mike Clark (denoted by '#')

According to Article V Section 5 of the Missouri Chess Association Bylaws:

*5. Ties. In the event of a tie, the remaining Directors-elect in the Region involved shall choose the Director from among the tied candidates. In the event of a vacancy due to no votes being received, or a Director-elect declining to serve, the remaining directors-elect in the Region involved shall select a member from that Region to be the Director. If the tie or vacancy has not been resolved within 30 days from the end of the election, or if more than half of the Director positions in a region are involved in a tie or are vacant, then the Directors-elect from all regions shall break the tie or fill the vacancy as described above.*

As the "remaining Directors-elect" from Region 3, we are charged with breaking the tie per the bylaws. After having given serious consideration to the matter, we believe that Mr. Tim Campbell as an incumbent Region 3 Director is best suited for the position, and thus, shall fill the remaining Board of Director's seat for Region 3. We feel confident that Mr. Campbell will serve the best interests of his constituency to the best of his ability and continue to be a positive influence for chess in Missouri and this organization.

Thank you for your attention in this matter,  
Bob Howe  
Thomas R. Rehmeier

# Opening of the Saint Louis Chess Club

~ Steve Goldberg ~  
*Scholasticchess@hotmail.com*

It was a spectacular opening for what promises to be a spectacular chess club. At the media cocktail reception the evening before the official opening of the **St. Louis Chess Club and Scholastic Center**, dozens of local media and chess aficionados were treated to tours, an abundance of free food and drinks, a talk by philanthropist Rex Sinquefeld and a lecture by local Life Master Bob Jacobs. The complimentary valet park-

Invited guests were greeted with a and a sturdy pocket magnetic chess roamed the three floors of the magics to the guests.

Approximately 6000 square feet in ated on a busy street in a tony, hip activity. On the sidewalk outside the stone chess tables, ready for a game an airy, open feeling with large win-

main floor is a reception desk where visitors can be greeted. The walls on both floors are adorned with flat panel displays of video art created by artist Diana Thater. These LCD/plasma monitors show re-enacted historic games in progress, on boards that appear to be floating, with hands periodically appearing on-screen. The week before, the club had an art opening which included a visit by Thater, which will be discussed in an upcoming article in Chess Life Magazine by CLO editor Jennifer Shahade.



*Diana Thater's video art in "The Board Room" cocktail reception.*

On the upper level is a large playing area, and a boardroom containing comfortable easy chairs for kibitzing or relaxing. The warm tones of the room, coupled with the soft rugs and sunlight streaming in the windows, ensures a comfortable space for players or guests. The club provides free wireless internet access so a favorite tournament can be followed online or a parent can occupy him- or herself while a child plays in an event at the center.



lecture by local Life Master Bob Ja-  
ing was a nice touch as well.

personalized name tag, a media kit set. Pleasant servers continually nificent club, offering various delica-

size, the St. Louis Chess Club is situ-  
part of urban St. Louis bustling with  
front doors sit about half a dozen  
at any time. Inside the club, there is  
dows and excellent lighting. On the

There are also large wall-mounted plasma screens which are connected to eight separate DGT chessboards, each connected to a computer able to relay live moves to the screens. In addition, there is a large lecture area in the lower level, equipped with a 52" plasma monitor that can be utilized for audiovisual presentations.

This lower level also contains a chess library of books and DVDs, a lounge for comfortable reading, and a full kitchen for events such as our



*Part of the second floor playing area.*



Throughout the club are attractive, tasteful furnishings. It seems clear that no expense was spared in producing a dignified décor appropriate for our classic game.

The club’s existence is primarily due to the generosity and passion of one man, Rex Sinquefield. Known in Missouri for his dedication to the advancement of educational initiatives, he explained his reason for opening this beautiful chess and scholastic center. “Kids who get into chess benefit in all sorts of ways,” he said, noting that the main purpose of the center is to support scholastic chess. However, “St. Louis has lacked a centralized resource to teach kids and to teach teachers.”



The lounge area of the lavish “Board Room”

The First Move program of America’s Foundation for Chess has begun to be utilized by a few schools in St. Louis, and it is the goal of the St. Louis Chess and Scholastic Center to increase this presence. Part of the club’s mission statement notes that the group “is committed to supporting those chess programs that already exist in area schools, while encouraging the development of new programs within regular school curricula.”

Toward the end of the evening reception, Life Master Bob Jacobs presented his well-attended talk entitled “Historical Sidelights in Chess.” Among the many interesting tidbits he offered:

- The second book ever printed in English, in 1476, was The Game and Play of Chess
- Advice from Lucena: only play after your opponent has had a great amount of food and drink
- A fascinating story of the role that chess may have played in the British losing the Revolutionary War
- Most of the nation’s founding fathers played chess, with Benjamin Franklin foremost among them; some of his games reputedly took place in women’s restrooms in France
- The story of three members of the 1939 British Chess Olympiad team who were instrumental in breaking the German “Enigma” code during World War II

The new St. Louis Chess and Scholastic Center is certainly one of the most impressive chess centers in the U.S., with many tournaments and lectures already planned. But one aspect it shares with chess clubs everywhere. As founder Sinquefield stated, the club is “where egos are shattered on a daily basis.”

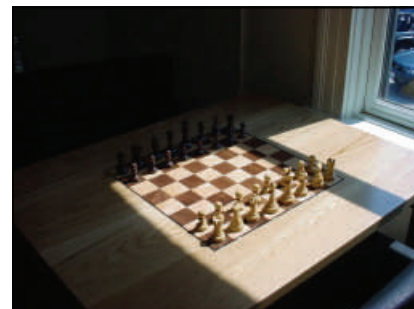


For more information, see [www.saintlouischessclub.org](http://www.saintlouischessclub.org) , or call (314) 361-2437. For more photos, check Steve Goldberg's blog at, [www.scholasticchess.blogspot.com](http://www.scholasticchess.blogspot.com).

“Reprinted with the permission of Chess Life Online, the Official Online Publication of the United States Chess Federation.”

### CHESS CLUB AND SCHOLASTIC CENTER OF SAINT LOUIS Hours of Operation & Weekly Activities

Day	Hours	Activities
Monday	Closed	
Tuesday	3pm to 10pm	Blitz 6:30pm (SSS G/5)
Wednesday	3pm to 10pm	Knights Tournament (G/90, 1 Rd/Week)
Thursday	11am to 10pm	Bughouse 6:30pm (1st & 3rd weeks)
Friday	3pm to 11pm	Friday Action Quads 6:30 pm (3RR G/29)
Saturday	12pm to 11pm	View the Events listing at the CCSCSL website to find dates of weekend tournaments.
Sunday	12pm to 10pm	



# Chess Club and Scholastic Center of Saint Louis to Host 2009 U.S. Championship Invitational

**ST. LOUIS, August 19, 2008** -- The Chess Club and Scholastic Center of Saint Louis, which Steve Goldberg called in Chess Life Online “certainly one of the most impressive chess centers in the country”, has been selected by the United States Chess Federation to host the 2009 U.S. Championship. The U.S. Chess Championship dates back to 1845.

The Chess Club and Scholastic Center, which was founded by retired investment fund manager Rex Sinquefield and opened in July 2008, is located at 4657 Maryland Avenue in St. Louis’ fashionable and historic Central West End neighborhood. The three-level, 6,000-square-foot facility possesses an array of customized features, including DGT chess boards, hand-made wooden chess tables, LCD-screen televisions, video installation art, overhead paging and an adjustable lighting system. The primary colors of the club are black and white, the colors of a traditional chessboard.

The players’ room is private and enclosed with its own kitchen and restroom. There is ample natural lighting with windows along two walls and two skylights in the space. Recessed adjustable lighting fixtures cover the ceiling to ensure an even light with appropriate brightness.

“We are proud to bring the 2009 U.S. Chess Championship to St. Louis,” said Tony Rich, executive director of the Chess Club and Scholastic Center of Saint Louis. “I am certain that the Chess Club and Scholastic Center of Saint Louis and the United States Chess Federation will make this an event unlike any other. The USCF has done an exemplary job of promoting chess nationally, and now we can bring that same national perspective to St. Louis.”

The championship will be held in May 2009. It will be a 9-round event, using the Swiss system with one round per day and a rest day between rounds 5 and 6.

Time controls will be the classical 40 moves in two hours, with the remaining moves in one hour.

Invitations to potential tournament participants will be issued to some of the top-rated U.S. players, the top-rated women, among other qualifiers and wild card participants, who will be announced later.

The championship will have a purse of \$100,000, with \$30,000 awarded to the winner, twice the amount of last year’s tournament. In case of even scores, no tie-breakers will be used. Instead, prize funds will be evenly divided between winners.

The underlying goal of the Chess Club and Scholastic Center of Saint Louis is to create a world class destination for chess players, both beginning and advanced and to elevate the game of chess throughout the Saint Louis metropolitan area. Additionally, the Center financially supports existing local scholastic chess programs while providing new programs, at no cost, to local schools currently without programs.

The Chess Club and Scholastic Center of Saint Louis is a not-for-profit, 501(c)3 organization. For more information, please visit [www.saintlouischessclub.org](http://www.saintlouischessclub.org).



*(Left to Right) Chess Club and Scholastic Center President Rex Sinquefield, Board member Rachel Keller Brown, and Executive Director Tony Rich (right).*



*2008 U.S. Champion  
GM Yuri Shulman*



*Highest-Rated U.S. Player  
GM Gata Kamsky*

The United States Chess Federation is the official, not-for-profit U.S. membership organization for chess players and chess supporters of all ages and strengths, from beginners to grandmasters. Founded in 1939 with the merger of the American Chess Federation and the National Chess Federation, USCF has grown to more than 80,000 members and nearly 1,200 affiliated chess clubs and organizations.

Under the management of a professional staff headquartered in Crossville, Tennessee, USCF sanctions thousands of tournaments with more than 500,000 officially rated games annually, 25 National Championships award titles to both amateurs and professionals, ranging from elementary school students to senior citizens.

USCF promotes the study and knowledge of the 1,500-year-old game of chess, for its own sake as an art and enjoyment, but also as a means for the improvement of society. It encourages the development of a network of institutions devoted to enhancing the growth of chess, from local clubs to state and regional associations, and it promotes chess in American schools.

# U.S. Women's Championship Coming to Saint Louis

**ST. LOUIS, October 8, 2008** -- The Chess Club and Scholastic Center of Saint Louis has also been selected by the United States Chess Federation to host the *2009 U.S. Women's Championship*. The U.S. Women's Chess Championship dates back to 1937. This is the second major tournament announcement made by The Chess Club and Scholastic Center of Saint Louis since its recent opening in July 2008. Just last month, the organization announced that it would host the United States Chess Championship next Spring.



*2007 U.S. Women's Champion  
IM Irina Krush*

The championship will be held in late summer or early fall 2009. The tournament is a 9 round event, paired using the Round Robin pairing system with one round per day and a rest day between rounds 5 and 6. Time controls will be the classical 40 moves in 2 hours, with the remaining moves in 1 hour. Invitations will be sent to the top 10 U.S. women by their rating.

The championship will have a purse of \$64,000, with \$15,000 awarded to the winner. In case of even scores, no tie-breakers will be used. Instead, prize funds will be evenly divided between winners.



*2008 U.S. Women's Champion  
IM Anna Zatonskih*



"Reprinted with the permission of Chess Life Online, the Official Online Publication of the United States Chess Federation."

# STL Sweet Summer Swiss

~Matthew J. Angeli~  
Chief Tournament Director

One of the drawbacks to doing something for the first time is that you are the guinea pig that will find hidden problems that have not been thought out yet. On July 19, 2008, the first major official tournament (Sweet Summer Swiss - STL) at the new St. Louis Chess Club and Scholastic Center of St. Louis was a witness to this idea as the first round started 51 minutes late due to a huge turnout of 53 entrants and to finding out that none of the clocks had been set to the tournament time control after everyone had registered. Piled onto that situation was the fact few players knew how to set the clocks. Given all this, many would think that the participants would be irate but rather they were buzzing with excitement, shock, and awe at the immense prestige and elegance of a place they can finally call home for St. Louis area chess tournaments.

A notable feature utilized for the tournament was the use of the plasma screens to display pairings. A technical difficulty prevented the pairings from coming in clear, but we can be sure this will be fixed in the near future. How many chess clubs around the country can say they use plasma screens to show pairings?

The first round was almost finished when Margaret Hua upset her opponent, rated 512 points above her. When I heard the news of the upset, I was expecting that I would have this irate high rated opponent fuming over this loss, but Jim Davies surprised me as he exclaimed excitedly that he did not care about losing since Margaret's endgame play had been played so well and accurate. Nearly everyone agreed that Margaret had it in the bag for the "Biggest Upset" prize. Nevertheless, during the fourth round, another young player Stephen Zhang zinged past his opponent and claimed the prize for defeating an opponent rated 862 points above him.



*One of the CCSCSL's numerous plasma screen monitors at the club that display tournament pairings.*

Below are some statistics along with the winners of each class with additional prizes and an honorable mention to a "Forgotten Tournament Player".

Master/Expert: Robert Jacobs (3)  
Class A: Joshua Frank (3.5)  
Class B: Daniel Roberts (4)  
Class C: Doug Howe and William Thompson (3)  
Class D: Peter Harris, Nathaniel Noss, and Luke Herbst (2)  
Class E: Stephen Zhang (3)  
U1000/Unrated: Brian Gadson (2.5)

Biggest Upset: Stephen Zhang (862 Points)  
Perfect Score Bonus: Daniel Roberts  
Forgotten Tournament Player: Thomas Rehmeier (best non-scholastic tournament result ever with 3.5 points out of 4 and still missed out on B class prize. When was the last time something like that happened?)



*Tournament champion with a perfect 4.0/4.0 score, Daniel Roberts*

Check out the complete crosstable at <http://www.uschess.org/msa/XtblMain.php?200807199131.0>



*Skittles action between rounds.*

Class Average points per player:

<u>Master/Expert:</u>	2.50
<u>Class A:</u>	2.56
<u>Class B:</u>	2.64
<u>Class C:</u>	2.05
<u>Class D:</u>	1.50
<u>Class E:</u>	1.63
<u>U1000/Unr:</u>	0.94



*Local players William Nesham (left) and Daniel Juengel (right).*

A rather interesting note of the results is that as you look over the winners of the classes from Master/Expert to class B, you see that the point total of the winner increases. The B class chess players showed out to be a strong bunch as they beat out all sections in terms of average points per player and total points for the winner of the class. Brian Gadson had a strong showing of 2.5 points but it was not enough to pull the bottom class's average over one.

Over \$1,163 was paid out in prizes with 10 players out of 53 cashing in. With the new chess club, it will be financially easier to hold tournaments with higher payouts, as was the case in this tournament. Given the large turnout, I boosted the class prizes from \$120 to \$159. Coupled with the Perfect Score Bonus of \$25 and Biggest Upset of \$25, a thirty dollar entry fee was probably a downright bargain.

While the tournament started terribly late (51 minutes late to be precise), strategic round times allowed for adjustments to be made that got the tournament back on track. By the start of the fourth round, the tournament was 5 minutes behind. Despite this and other minor issues, it was obvious that many people thoroughly enjoyed themselves, and were excited to be part of the beginning of a new era in St. Louis chess.

While it was a long day for many-especially for me-, it seemed that all had a great time and were thrilled to be there. I thank everyone who came and to Tony Rich and the workers of the club as they were very helpful in assisting with the tournament. I am especially thankful to the generosity of a person who has brought to St. Louis an official place to not only hold chess tournaments, but to provide an environment to aid and nurture a game that has the misfortune of being misunderstood by not only many who do not play the game, but by many who do play the game.

**C10: French Defense**

STL Sweet Summer Swiss

W: Robert M. Jacobs (2106)

B: Aleksey Kazakevich (1527)

1.e4 e6 2.d4 d5 3.Nc3 dxe4 4.Nxe4 Nd7 5.Nf3 Ngf6 6.Nxf6+ Nxf6 7.Bd3 Be7 8.Bd2 0-0 9.Qe2 b6 10.0-0 Bb7 11.c3 c5 12.dxc5 Bxc5 13.Rad1 Qc7 14.Bg5 Be7 15.Ne5 Rad8 16.Bb1 Rxd1 17.Rxd1 Rd8 18.f4 Rxd1+ 19.Qxd1 Qc5+ 20.Kh1 Qf2 21.Nf3 Bxf3 22.gxf3 Qxb2 23.Qd3 h6 24.Bh4 Qc1+ 25.Kg2 Qxf4 26.Bg3 Qa4 27.Be5 Qd7 28.Qe2 Qd5 29.c4 Qc6 30.Qd3 Draw agreed. ½-½

**D31: Queen's Gambit Declined**

STL Sweet Summer Swiss

W: Kevin Dale Johnson (2000)

B: Richard Fox (1467)

1.d4 d5 2.c4 e6 3.Nc3 Bd7 4.Nf3 dxc4 5.a4 c6 6.e3 b5 7.axb5 cxb5 8.Ne5 Nf6 9.Qf3 b4 10.Qxa8 bxc3 11.bxc3 Nd5 12.Nxd7 Nxd7 13.Rxa7 Nxc3 14.Bxc4 Bd6 15.Bd2 Nb1 16.Qxd8+ Kxd8 17.Ba5+ Kc8 18.Ba6+ Black resigns. 1-0

**E74: King's Indian Defense**

STL Sweet Summer Swiss

W: Daniel J. Tuttle (1398)

B: Selden Trimble (1935)

1.d4 Nf6 2.c4 g6 3.Nc3 Bg7 4.e4 d6 5.Be2 0-0 6.Bg5 c5 7.dxc5 dxc5 8.Qxd8 Rxd8 9.e5 Nfd7 10.Nd5 Nc6 11.f4 Nb6 12.Nxe7+ Nxe7 13.Bxe7 Re8 14.Bxc5 Be6 15.Bxb6 axb6 16.Nf3 Rad8 17.Kf2 Rd7 18.Rhd1 Red8 19.b3 Bf8 20.Rxd7 Rxd7 21.Rd1 Bc5+ 22.Kf1 h6 23.Rxd7 Bxd7 24.Bd3 Be3 25.g3 Bh3+ 26.Ke2 Bc5 27.Be4 Bc8 28.Bd5 Kg7 29.Nd2 Bg1 30.Kf3 Bh3 31.Ne4 Bxh2 32.Nd6 h5 33.Nxf7 Kf8 34.Ng5 Bf1 35.Be4 Kg7 36.Kf2 Bxg3+ 37.Kxg3 Be2 38.Bxb7 Bd3 39.Be4 Be2 40.Nf3 Kf7 41.Kf2 Bd1 42.Ke1 Bxf3 43.Bxf3 h4 44.Kf2 Ke6 45.Bg4+ Ke7 46.b4 White resigns. 0-1

See the games section on pgs 27-29 for many for games from this event.

# SUPER SIMULS IN SAINT LOUIS

The Chess Club & Scholastic Center wasted little time bringing in some big names to help celebrate the Club's opening. Grandmaster Maurice Ashley was the first of what will be a long list of GM's to host events, when he held a simul on August 10th. Although GM Ashley has been out of competitive chess for some years now, he clearly hasn't lost a step as he racked up a win after win against a quality list of opponents.

Serbian Master Sasa Jevtic also came through St. Louis, and ran several lectures and a Simul. Sasa came to the CCSCSL straight from achieving his first IM norm in a tough round robin tournament in Europe. Sasa got the best of almost all his opponents in the Simul, but this time the locals were able to score a few wins and draws. Below are some interesting games from the event.



*Serbian Chess Master  
Sasa Jevtic*

## King's Indian

Jevtic Simul

W: Sasa Jevtic

(2275)

B: Tom Gaul

(1831)

1.Nf3 Nf6 2.c4 g6 3.Nc3 Bg7 4.d4 0-0 5.e4 d6  
6.Be2 Nfd7 7.0-0 Nc6 8.Rb1 f5 9.b4 e5 10.d5  
Nd4 11.exf5 Nxf3+ 12.Bxf3 gxf5 13.Qc2 Kh8  
14.g3 b6 15.Nd1 Qf6 16.Bg2 a5 17.a3 axb4  
18.axb4 Rf7 19.Bb2 h5 20.f4 Ra2 21.Qb3 Ra6 22.Qf3 Qg6 23.Qf2 Nf6 24.Ne3  
Ra2 25.Ra1 Rxb2 26.Qxb2 exf4 27.gxf4 Ne4 28.Qe2 Bxa1 29.Rxa1 Rg7 30.Kh1 Qf6 31.Ra8 Rg8 32.Qxh5+ Kg7  
33.Bxe4 fxe4 34.Qg5+ Qxg5 35.fxg5 Kg6 36.h4 Kh5 37.Nf5 Kg4 38.Nh6+ 1-0

## French Defense

Jevtic Simul

W: Sasa Jevtic

(2275)

B: Ken West

(1234)

1.Nf3 Nc6 2.d4 e6 3.e4 Nf6 4.Bd3 d5 5.e5 Nd7 6.Nbd2 Bb4 7.c3 Ba5 8.0-0 f6  
9.exf6 Nxf6 10.Ne5 Bd7 11.Ndf3 Qe7 12.Nxc6 Bxc6 13.a4 a6 14.Bg5 0-0-0 15.b4  
Bxb4 16.cxb4 Qxb4 17.Qc2 Rdf8 18.Rfb1 Qd6 19.Ne5 Nd7 20.Nxc6 Qxc6  
21.Qxc6 1-0

## Colle System

Jevtic Simul

W: Sasa Jevtic

(2275)

B: Henry Cao

(1826)

1.d4 d5 2.Nf3 Nf6 3.e3 Nbd7 4.Bd3 e6 5.0-0 Bd6 6.b3 b6 7.Bb2 0-0 8.Nbd2 Bb7  
9.Ne5 h6 10.f4 Be7 11.Qf3 c5 12.Qh3 cxd4 13.exd4 Nxe5 14.fxe5 Nh7 15.Nf3  
Qc8 16.Rf2 Ba6 17.Bxa6 Qxa6 18.a4 Ng5 19.Nxg5 Bxg5 20.Raf1 Qb7 21.g4 Qe7  
22.Qd3 Rac8 23.b4 Rc4 24.Ba3 Qd7 25.b5 Be7 26.h4 Rxd4 27.Qxd4 Bxa3  
28.Qf4 Bc5 29.Kh2 Bxf2 30.Rxf2 Qe7 31.g5 h5 32.c4 Rd8 33.Rd2 dxc4  
34.Rxd8+ Qxd8 35.Qxc4 Qd2+ 36.Kh3 Qe3+ 37.Kg2 Qxe5 38.Qc8+ Kh7 0-1

## Modern Defense

Jevtic Simul

W: Sasa Jevtic

(2275)

B: Alex Marler

(1803)

1.Nf3 g6 2.d4 Bg7 3.g3 b6 4.Bg2 Bb7 5.c4 e6 6.Nc3 Ne7 7.e4 d6 8.0-0 Nd7 9.Rb1  
a5 10.a4 0-0 11.Bg5 h6 12.Be3 Kh7 13.h4 Nf6 14.Qc2 Ng4 15.Rbd1 Nc6 16.Nb5  
e5 17.d5 Nxe3 18.fxe3 Nb4 19.Qb1 Bc8 20.Rf2 Na6 21.Rdf1 Nc5 22.Nh2 Kg8  
23.Qc2 h5 24.Nf3 Bh6 25.Re1 Bg4 ½-½

## Closed Sicilian

Jevtic Simul

W: Sasa Jevtic

(2275)

B: Jialin Ding

(1646)

1.Nf3 c5 2.g3 Nc6 3.Bg2 g6 4.0-0 Bg7 5.e3 e5 6.e4 Nge7 7.Nc3 d6 8.d3 0-0 9.Rb1  
a6 10.a3 b5 11.b4 Rb8 12.Bd2 Bg4 13.h3 Bd7 14.Nd5 Nxd5 15.exd5 Nd4 16.c4  
Bf5 17.Nxd4 Bxd3 18.Nc6 Qd7 19.Nxb8 Rxb8 20.Be3 Bxb1 21.Qxb1 bxc4  
22.Re1 Qb5 23.Bf1 Qa4 24.Rxc4 Qxa3 25.Qc2 Rxb4 26.Rxb4 Qxb4 27.Bxa6 f5  
28.Qd2 Qxd2 29.Bxd2 e4 30.Kf1 Kf7 31.Ke2 Bd4 32.Be3 Kf6 33.h4 Ke5 34.Bb7  
Bxe3 35.fxe3 h6 36.Bc8 Kxd5 37.h5 g5 38.Bxf5 Ke5 39.Bc8 d5 40.Kd2 d4 41.Bg4 Kd5 42.Bd1 Ke5 43.Ba4 Kf5  
44.Bd7+ Ke5 45.Bg4 Kd5 46.Kc2 Ke5 47.Bd7 Kd5 48.Be8 Ke5 49.Kb3 Kd5 50.Bf7+ Ke5 51.Bc4 Kf5 52.Be2 g4  
53.Kc4 Kg5 54.exd4 cxd4 55.Kxd4 Kxh5 56.Bb5 Kg5 ½-½

Visit Sasa Jevtic's Professional Coaching Website: <http://www.chesscoaching.net/>

# Missouri Open & Chess Festival

~Thomas R. Rehmeier~ & ~Bob Howe~  
 Chief Tournament Director      Assistant Tournament Director

The 2008 Missouri Open and Chess Festival was held at the Best Western in Columbia, Missouri on the weekend of September 19th through 21st. Only the second Chess Festival in Missouri, the weekend was absolutely filled with chess. This year's Missouri Open was accompanied by the State Invitational Championship, the Missouri Blitz Championship, Quick Championship, Bughouse Championship, as well as a scholastic tournament. A total of 129 players were in attendance at the 2008 Open and Chess Festival. The tournament consisted of many players from neighboring states, and others from as far away as South Dakota. We were also very happy to have Tim Tobiason of TobyChess and Bill Wright of Chess/Wright onsite as the chess supply vendors.



*Tim "Toby" Tobiason with a small fraction of the spread he brought to the tournament.*

## Invitational Championship:

**Round one** of the 2009 Invitational Event saw lots of action as all three boards produced wins. On the featured table, which was projected on a large screen so the whole tournament hall could follow, defending champion Ron Luther was able to score a black win against James Davies. The other two games lasted much longer; in fact they were the final two games to finish in the whole tournament.

This was representative of what was to come all weekend, as the invitational players showed amazing fighting spirit, and all fought long and hard every round. On board two, the up and coming KC player Darius Masuhud was matching veteran Waldo Odak move for move until deep into the endgame. Finally Masuhud played a rook sacrifice that appeared to win a crucial pawn. Odak wasn't fooled though, and refuted the sacrifice, leading to a quick resignation. The final game to finish was an upset victory by Nathan Swinger. Swinger took the full point from the man who is probably Missouri's most active tournament player, and who has enjoyed a successful year in 2008, Kevin Johnson.

**A46: London & Torre Systems**  
 2008 Invitational Championship  
 W: Waldo Odak (2052)  
 B: Darius Masuhud (1917)

1.d4 Nf6 2.Nf3 e6 3.Bf4 Bb4+ 4.c3 Be7 5.h3 b6 6.e3 Bb7 7.Nbd2 d6 8.Bb5+ Nbd7 9.0-0 h6 10.Bh2 0-0 11.a4 Ne4 12.Nxe4 Bxe4 13.Nd2 Bb7 14.f4 f5 15.Qh5 Kh7 16.b4 Nf6 17.Qe2 Ne4 18.Nxe4 Bxe4 19.a5 c5 20.Bd3 Bxd3 21.Qxd3 d5 22.axb6 axb6 23.Qb5 Qc7 24.Ra6 Rxa6 25.Qxa6 cxb4 26.cxb4 Bxb4 27.g4 Qc3 28.Qe2 Ra8 29.Bg3 Ra3 30.Bf2 Qd3 31.Qxd3 Rxd3 32.Rb1 Ba5 33.gxf5 exf5 34.Rb5 Bd2 35.Kf1 Ba5 36.Rxd5 Kg6 37.Ke2 Rc3 38.Bh4 Rc2+ 39.Kf3 Rh2 40.Bg3 Rxh3 41.Kg2 Rh5 42.Re5 Kf7 43.d5 Bb4 44.Re6 Bc5 45.Be1 g5 46.Bc3 gxf4 47.exf4 Rh4 48.Rf6+ Ke7 49.Rxf5 Rg4+ 50.Kf3 Rg6 51.Rh5 b5 52.Rh2 Ra6 53.Ke4 Ra4+ 54.Kf5 Rxf4+ 55.Kxf4 Bd6+ 56.Be5 Black resigns. 1-0



*Round 2 of the Open and Invitational. We were lucky to have a DGT board a projector so the top Invitational game was viewable to the whole room.*

In **Round Two** all three round one winners were given the luxury of the white pieces. The pairings were all set months before, giving the participants a chance to prepare for opponents by color. The top board saw Ron Luther get into a precarious position against Darius Masuhud. Ron had a classic isolated D pawn that soon pushed up to d6, but also stood down a rook for bishop and pawn. The black rooks looked excellent on the open c and e files, but it was hard to find what concrete could be gained from this positional advantage. The d pawn was doing its job by clogging and cramping black's position, and Luther slowly broke open the black king with a pawn storm. Then, with Darius rushing his pieces over to save his king, the d pawn came to life and won the game. Meanwhile on board two KDJ slowly improved in his game against Waldo Odak. The ending looked promising, though not easy, as Johnson played with an extra Knight against Odak's two pawns. The extra piece proved to be the better deal, and both players left round two with even scores after Johnson's

win with black. James Davies was looking to even his score as well after going up two pawns against Columbia's Nathan Swinger, but Swinger's pieces were active and dangerous in the Q+R ending. Being two pawns up is of little use if you get checkmated! Nathan had some initiative and pushed, but it turned out Mr. Davies defense was too tough to crack, and as he slowly activated his own pieces, and the white king fell.

**B75: Sicilian Dragon—Yugoslav**

2008 Invitational Championship

W: Nathan Swinger (1893)

B: James A. Davies (2000)

1.e4 c5 2.Nf3 Nc6 3.Nc3 g6 4.d4 cxd4 5.Nxd4 Bg7 6.Be3 d6 7.Qd2 Nf6 8.f3 a6 9.0-0-0 Qc7 10.g4 h6 11.h4 Nxd4 12.Bxd4 Be6 13.Nd5 Bxd5 14.exd5 Rc8 15.Kb1 Ne4 16.fxe4 Bxd4 17.Bb5+ axb5 18.Qxd4 Qxc2+ 19.Ka1 0-0 20.Qe3 Ra8 21.Rd3 Ra4 22.Rc1 Rfa8 23.a3 Qg2 24.Rdc3 Qxg4 25.Qxh6 Rxe4 26.h5 Rf8 27.hxg6 Qxg6 28.Qh2 f5 29.Rh3 Rg4 30.Rh8+ Kg7 31.Rh1 Kf7 32.Rh6 Rg2 33.Qh5 Rg1+ 34.Ka2 Rxh1 35.Qxh1 Qg4 36.Re6 Rg8 37.Qe1 Qg5 38.Qe2 Re8 39.a4 f4 40.Qe4 Rc8 41.Qh7+ Ke8 42.Rg6 Qxd5+ 43.Kb1 Qd1+ 44.Ka2 Qxa4+ 0-1

**D10: Slav Defense**

2008 Invitational Championship

W: Kevin Dale Johnson (2000)

B: Waldo Odak (2054)

1.d4 d5 2.c4 c6 3.Nc3 Nf6 4.Bg5 Nbd7 5.e3 Qa5 6.Qd2 e6 7.a3 Bb4 8.Bxf6 Nxf6 9.Rc1 Bd6 10.cxd5 Nxd5 11.Nxd5 Qxd2+ 12.Kxd2 cxd5 13.Bb5+ Ke7 14.Nf3 a6 15.Bd3 f6 16.Rc3 Bd7 17.Rhc1 e5 18.dxe5 fxe5 19.Bb1 Raf8 20.Ke1 Rf6 21.Ba2 Bc6 22.Rd1 Rhf8 23.Bxd5 Bxd5 24.Rxd5 e4 25.Ng5 Rxf2 26.Nxe4 Rf1+ 27.Ke2 Bxh2 28.g3 Bxg3 29.Nxg3 R8f2+ 30.Kd3 Rd1+ 31.Ke4 Rxd5 32.Kxd5 Rxb2 33.Rc7+ Kf6 34.Nh5+ Kg6 35.Nxg7 h5 36.Ne6 Rb3 37.Nf4+ Kf5 38.Rf7+ Kg4 39.Ke4 Rxa3 40.Rg7+ Kh4 41.Ne6 Ra2 42.Kf3 Kh3 43.Ng5+ 1-0

**Round Three** was a rematch of the decisive round of the MO Class Championships, with Ron Luther and Kevin Johnson squaring off. The game was a hard fought affair with Luther getting a nice attack, and Johnson defending move after move, until at last the pressure became too great. Ron Luther had to work hard, but the result was just what he wanted, a 3-0 score and a head to head match against his closest pursuer set for Sunday. Meanwhile, second seed Waldo Odak wielded the white pieces against Dr. Nathan Swinger. These two opponents both would face tournament leader Ron Luther on day two, so the winner of this match would stand the best chance of catching the reigning Chess King. The game featured a blunder by each side. Waldo's mistake turned a good position into a bad one, but Swinger's slip allowed a devastating Queen check that ended the game, as the King's only escape square led to a Royal Bishop fork. Odak would enter day two a single point behind the leader, with a head to head pairing in round 5 looming large. The third match between Jim Davies and Darius Masuhud could come in play as well if Davies were able to score a second win and stay in the hunt. Masuhud, after giving the top two seeds tough runs in the first two rounds, was looking to get some points for all his hard work on the day. It worked out in favor of the Hall of Famer Davies, as he picked up one pawn, then a second on his way to victory. That left Waldo Odak and Jim Davies one point behind Luther with two games to go.

**B25: Closed Sicilian**

2008 Invitational Championship

W: Darius Masuhud (1917)

B: James A. Davies (2000)

1.e4 c5 2.Nc3 d6 3.g3 Nf6 4.Bg2 Nc6 5.d3 g6 6.Nge2 Bg7 7.0-0 0-0 8.h3 Bd7 9.Be3 Rb8 10.Qd2 b5 11.Bh6 b4 12.Nd5 e6 13.Bxg7 Kxg7 14.Ne3 Qc7 15.f4 Ne8 16.f5 f6 17.Nf4 Qc8 18.fxe6 Bxe6 19.Rf2 Ne5 20.Raf1 Bg8 21.c3 Qa6 22.c4 Qxa2 23.Ned5 Qa5 24.b3 Qd8 25.d4 Nc6 26.dxc5 dxc5 27.Qe3 Nd4 28.e5 f5 29.e6 Qd6 30.e7 Rf6 31.Nxf6 Nxf6 32.Nd5 Bxd5 33.Bxd5 Re8 34.Re1 Ne4 35.Bxe4 Rxe7 36.Ra1 fxe4 37.Kh1 Qe5 38.Kg2 Nf5 39.Rxf5 Qxf5 40.Rd1 Rf7 41.Qf4 Qxf4 42.gxf4 Rxf4 43.Rd5 Rf3 44.Rxc5 Rxb3 45.Ra5 Rb2+ 0-1

**Round Four** continued to build suspense, as the two pursuers, Odak and Davies were paired against each other. A draw between them and a win by Luther would decide the event with a round to spare, so both players were looking for the full point. The game was yet another long hard battle with a complicated position. In the end, it was Jim Davies that emerged with the victory, moving him to 3/4pts. Meanwhile, Ron Luther wandered the hall, as his opponent was late to arrive. Unfortunately, the hour would pass without his arrival and Ron picked up a fourth round win by forfeit, as Nathan Swinger did not reach the tournament until after his hour had ticked away. An apologetic and somewhat embarrassed Swinger came in shortly after, flustered by suffering a defeat via oversleeping! In the third game, Darius Masuhud was finally rewarded for his hard work with a victory over Kevin Johnson.

This meant Ron Luther entered the **last round** needing only a draw to secure first place, but his opponent wasn't interested in giving it. Waldo Odak instead used the white pieces to get an excellent, though locked position against the tournament leader. The players moved quickly, getting in over 40 moves each with half the time remaining. As the game went on, things continued to look much the same, that the game could easily draw, but that Odak retained the winning chances. The St. Louis expert was determined to play the spoiler, and continued to press Luther. After a long struggle, Odak was finally able to break-through on Luther's King, and the champ suffered a stunning last round defeat! Odak was eliminated from winning the event with his loss in round 4,



*Action from Round 4 of the Invitational*



but he gamely came back and played hard in the final round, refusing an early draw offer, and making the tournament exciting to the end. The result of that game would still be meaningless though, unless the only player who was in range of catching up to Luther, Mr. James Davies, could secure a fourth straight win, this time over Kevin Johnson. KDJ also wielded the white pieces (both tournament leaders had black last round), and used them to make a tough game for Davies. Johnson however, was clearly out of form that weekend, and his good position was spoiled, leading to the crucial victory for Davies.

**A46: Torre and London Systems**

2008 Invitational Championship

W: Waldo Odak (2054)

B: Ron Luther (2205)

[Annotations by Waldo Odak] *The situation was that Ron Luther was steamrolling the field, sporting a 4-0 score, on his way to another title, whilst I had a somewhat sub-par score of 2-2, with no chance for anything but spoiler, Jim Davies in the wings at 3-1 had interest in the game, only he could close the gap, if I somehow managed to win. Still, since*

*I had less pressure now, I could play a relaxed way, and see what happens, a last round win would be good for the ego, so... 1. d4 Nf6 2. Nf3 c5 3. g3 cxd4 4. Nxd4 e5 (in the blitz tournament this variation was also played by Ron, I tried Nb3 and lost badly, so...) 5. Nf3! Bc5 6. Bg2 Nc6 7. 0-0 h6 (d5 looked more aggressive) 8. c4 0-0 9. Nc3 Re8 10. b3 e4 11. Ne1 Qe7 12. Nc2 Qe5 13. Na4 Bf8 14. Bb2 Qh5?! (perhaps Qf5 was required to prevent the doubling) 15. Bxf6 gxf6 16. e3 Qxe1 (perhaps Ron thought this queen exchange would steer the game to a draw which he needed) 17. Raxd1 d6 (at this point I felt Black's position had some weak points to work with, such as d5 and f4) 18. Nc3 Bg4 19. Rd2 f5 20. Nd4 Nxd4 21. exd4 (Rxd4? meets Bg7 and Ron is champ!) Be7 22. Nd5 (the Knight finds a great square) Bg5 23. Rb2 Rac8 24. Ne3 Bf6 25. Rd2 Bg5 26. h3 Bf3 27. h4 Bxe3 28. fxe3 Bg4 (to hold f5) 29. Rdf2 b5 (cxb5 Rc3 is no bargain) 30. Rc1 Rc6 31. c5 d5 (and a protected passed pawn is established, but how to break through?) 32. b4 a6 33. Rb2 Rb8 34. Bf1 f4 (this pawn sacrifice is mandatory to get the bishop into the game on the other wing) 35. gxf4 Bd7 36. Kh2 Kg7 37. Rc3 Kf6 38. Ra3 Rg8 (and Ron shows me my problem, how to break through on the queen side while defending the g-file?) 39. Rg2 Rb8 40. Ra5 Ke7 41. Rb2 Rg6 42. Rg2 Rc6 43. Be2 Kf6 44. Bd1 Ke7 45. Ra3 Rf6 46. Rb3 Ra8 47. Ra3 Rb8 48. Ra5 Ra8 49. h5 ! (finally a plan , the g6 square is denied, he still has g8) Rb8 50. Rb2 Rg8 51. Rg2 Rb8 52. Bg4! (I count my bishop to be better, but I can make no progress unless the bishops face off) Be8 (Ron sees this and must hold on to the bad bishop!) 53. Bh3 Kf8 54. Rb2 Ke7 (the magic moment finally arrives! his own bishop blocks access to g8 , and the pawn holds g6, a critical tempo) 55. a4! (breaking through) Bd7 56. Bf1 Rg8 57. axb5 Rg4 (the positional game is lost , he goes for the attack) 58. bxa6 Rf5 (better watch out Rxh5 is a nasty threat!) 59. Rg2! Rxh5+ 60. Kg1 Rgh4 61. a7 Rh1+ 62. Kf2 R5h3 63. Be2 (no time to queen , gotta hold the Rf3+ threat) Rb1 64. a8=Q Rb2 65. Ra1! (even now with a queen , a careless move like Qxd5? meets Rf3+ and mate in 3!, that would have been nasty!) but now, with the rook defending the 1st rank there is nothing left but ... resigns. 1-0*

Congratulations to Ron Luther anyway, who went on to win the blitz playoff vs Jim Davies who won the last round, but at least he had to work a little harder for another MO Championship!

So two exciting days of chess ended with Ron Luther and James Davies tied at four points each. The tiebreak was 1. Most wins. 2. Blitz tie-break. Both players had won four games, so it went to the best of three Blitz games for the state championship. In the first game Jim Davies built a winning position, but the flag falling will ruin even the greatest of advantages, and Davies' flag fell. The second game resulted in a draw, giving Ron Luther a 1.5-.5 lead. He would need a win or draw in the final blitz game to secure the championship, and he succeeded. After two close fought games, the third went clearly Luther's way, and Ron earned his NINTH STATE TITLE. Congratulations Ron!

There is no way we can adequately describe and compliment the fighting spirit showed by this group of invitational players. Game after game was tense, complicated and for patzers like ourselves, almost impossible to even tell who had the advantage until it was over. But most impressive, it was impossible to distinguish, even in the late rounds, which players were playing for the championship and which for pride. In two rounds, the invitational games made up not just the last game to finish, but also the last two games to finish! They simply all six fought hard and played great chess. In the last round, Swinger and Masuhud played a hard fought draw on the third board. This game, which wasn't settled until a single minor and three symmetrical pawns each was left on the board, represented the **one and only draw** in the Fifteen Invitational games! Congratulations to the winners, and on behalf of the organizers and all the players that enjoyed following the games, thank you!!!

**Missouri Open:** The Invitational wasn't the only chess being played. The Missouri Open provided many great match-up's over the weekend. The event was divided into an Open section, which anyone could play in, and a reserve/U1600 section. The Open section of the tournament was a war of attrition early on. Upsets and hard fought draws quickly narrowed the field. By the end of round two, only two players had managed to bring home two points. Dan Roberts, who already has shown some impressive chess this year, and Kansas resident Jason Kasick would face off in the day's last round to see who could enter the second day in the driver's seat.

The third and fourth rounds of the Open section continued this pattern, with full points hard to come by. The top boards saw a rash of draws, with few decided early. Game after game was battled out until by the fifth round, 3 of 4 was enough to tie for first. Four players had managed to accumulate that score, with two Missourians, Steven Bange and

Nathaniel Fast, facing off against two out-of-staters, James Ellis of Iowa and Jason Kasick of Kansas. The Missourians were underdogs on both boards, and were unable to overcome their higher rated opponents. Ellis and Kasick took the top prize, while Bob Holliman, who tied for third with Nick Karlow, took the Missouri Open Championship plaque as the highest placing MO resident.

In the reserve section, top seed Jialin Ding was able to hold his own on the first day. He finished with the only 3-0 in the section. Jialin is a good representative of the reserve section, as it was filled with young players scoring upsets and picking up points. Many of the young players waved off the one-day scholastic event to instead take the challenge of the reserve section of the main event, and for many of them it has paid off.



*Missouri Reserve Champion  
Jialin Ding (right)*

Veteran scholastic tournament director Ed Baur found himself across the board from the undefeated youngster Jialin Ding in the fourth round. It rested on his shoulders to try and slow down the rapidly improving Ding from sweeping through to the final round. If he could succeed, the event would be wide open in the final round, with a pack of players close in pursuit. The game went the distance, with material even and Jialin trying over and over to break through Ed's solid position. The pieces came off one by one, until finally, down to just a rook and a few pawns, Jialin found a winning plan and retained his perfect score.

The last round of the reserve showed clearly this was a year for the young. The top two boards were filled with four scholastic players, three younger than high school age. Andrew Latham scored a win early on board two, giving him an amazing 4.5 as an 1135 in a U/1600 division! The only question was if 4.5 would be enough, or would Jialin win five straight to take sole first. The answer was slow coming, as Jialin and his opponent, James Smith, would be the last game of the tournament to finish. Jialin went up a pawn early in the game, but young Mr. Smith wouldn't give him any more, and the two battled on until both were under 10 minutes. In the end, with his last minutes slipping away, Smith was forced to start blitzing out moves, while Ding, with a 6 minute time lead, took advantage of his mistakes and wrested control of the game. With that victory Jialin scored a perfect 5/5, the only one of the event!

### **Missouri Quick Championship:**

Eighteen players arrived to the Festival Friday evening to take part in the Missouri Quick Chess Championship, a 4-round Game/29 tournament. Jason Kasick of Kansas seemed unstoppable as the only 3-0 going into the final round. Not until round 4 when he was paired with the reigning Missouri State Champion and Quick Chess Champion, Ron Luther did Jason meet his match. The two battled it out until an even position was finally reached and they shook hands. Kasick took home the purse but the state title moved down to the top Missourians. The famous Cao brothers, Kevin and Henry along with the defending champion Luther tied for 2nd place with 3.0/4. When the final results were tallied and tie breaks calculated, it was Kevin Cao of Saint Louis who was awarded the Championship plaque.

### **Missouri Bughouse Championship:**

Only a handful of players attending the Bughouse championship held Saturday morning before the start of the Missouri Open but that didn't stop the great enthusiasm of all who decided to play. The dynamic duo of Jason Kasick and Tony Dutiel mowed down all in their way to secure first place with a perfect score. This was the second event in which Mr. Kasick achieved a top finish but as before the title had to be bestowed on the highest-finishing Missourians, none other than Henry and Kevin Cao. It seemed that the Cao brothers had their eyes set on taking all of the plaques home by the end of the weekend.



State Champion & newly crowned  
Blitz Champion, LM Ronald Luther.

### **Missouri Blitz Championship:**

Early Sunday morning, nineteen well-rested players decided to have a go at winning the Missouri Blitz Champion title. The 5-round Game/5 blitz tournament also consisted of 3 out of 6 participants of the Invitational. At the start of round 5, Ron Luther was basically untouchable. The State Champion defeated Expert Waldo Odak to clinch a perfect score and sole 1st Place.

---

*To view complete crosstables of the entire Missouri Chess Festival, please visit:*

**Open & Invitational:** <http://www.uschess.org/msa/XtblMain.php?200809218611.0>

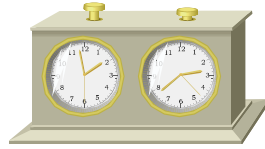
**Quick:** <http://www.uschess.org/msa/XtblMain.php?200809198071>

**Blitz:** <http://www.uschess.org/msa/XtblMain.php?200809218531>

**MCA Scholastic:** <http://www.uschess.org/msa/XtblMain.php?200809208381>



# QUICK CHESS



~ Timothy C. Nesham ~  
Chief Tournament Director

Renzo Herrera, a student from Peru attending UMSL took first place in the latest event in the St. Peter's quick series. Henry Cao, William Tong and Jialin Ding shared 2nd-3rd place. The influence of the Internet Chess Club was felt in the fourth round when I noticed that my son, playing Black against William Tong was playing the same opening as Jialin Ding against Kevin Johnson. Both were playing the Budapest Gambit. As they sat next to each other their games were mirror images of each other for about seven moves. Later I confirmed that they both had learned the Budapest from the ICC Gambit Video series.

The upset prize went to William Nesham (850) who beat Kevin Cao (1890) on the White side of the Evan's Gambit.

### Alekhine's Defense

St. Peter's Quick

W: William Nesham (850)

B: Kevin Cao (1890)

1. e4 e5 2. Nf3 Nc6 3. Bc4 Bc5 (Be7 is better) 4. b4 Bxb4 5. c3 Bc5 6. O-O d6 7. d4 exd4 8. cxd4 Bb6 9. Ng5 Bxd4 10. Nxf7 Qf6 11. Nxe8 Bxa1 12. Bxg8 Qf8 13. Qd5 Ne7 14. Qf7+ Qxf7 15. Bxf7+ Kf8 16. Bb3 d5 17. exd5 Bf5 18. Ba3 g6 19.

Re1 Re8 20. Ba4 c6 21. d6 Bxh8 22. dxe7+ Kg8 23. Bb3+ Kg7 24. Bb2+ Kh6 25. Bxh8 Bxb1 26. Bf7 1-0

No.	Name	Quick Pts	Rnd1	Rnd2	Rnd3	Rnd4
1	Herrera, Renzo	1762 4.0	W12	W7	W3	W2
2	Cao, Henry	1642 3.0	W9	W6	W4	L1
3	Tong, William M	1548 3.0	W13	W5	L1	W8
4	Ding, Jialin	1447 3.0	W10	W11	L2	W6
5	Cao, Kevin Y	1823 2.0	W11	L3	L8	W9
6	Johnson, Kevin Dale	1739 2.0	W8	L2	W12	L4
7	Whitcomb, Chris J	1580 2.0	W14	L1	L9	W12
8	Nesham, William	827 2.0	L6	W13	W5	L3
9	Yin, Michael	652 2.0	L2	W10	W7	L5
10	Gutterman, Yoav	Unr. 2.0	L4	L9	W14	W11
11	Noss, Nathaniel S	1227 1.0	L5	L4	W13	L10
12	Zhang, Stephen J	889 1.0	L1	W14	L6	L7
13	Johnson, Lucas M	510 1.0	L3	L8	L11	W14
14	Ding, Jason	543 0.0	L7	L12	L10	L13

IN  
SAIN  
T  
P  
E  
E  
T  
E  
R  
S

### CALLING ALL MISSOURI TOURNAMENT DIRECTORS

*Would you like to have a tournament report for one of your events published in the MCB? Please send us games (annotated if possible), photographs, crosstables, and a short write-up, and we will do our best to make sure it your report will be included in the next issue.*

*Thanks! -Missouri Chess Bulletin Editors.*

# A Year to Remember

~ Ronald G. Luther ~  
Life Master & Missouri State Champion

*2007 was, for me, a year to remember.*

After winning one of the strongest tournaments (2006 Invitational) in MCA history, one might have asked what is there left to do? After winning the 2007 Kansas City Open, and the 2007 St. Louis Open I decided to try and accomplish something that to my knowledge had never been done before. To attempt to win all 4 major MCA events in one year. This "Grand Slam" of Missouri Chess, (Kansas City Open, St Louis Open, Mo Class Master/Expert Section, and the State Championship) was culminated with a 5-0 result at the 2007 MO Invitational. What made it sweeter was that this "Grand Slam" was finished without a single loss.



*Life Master Ronald Luther (right) just after clinching his 9th Missouri State Chess Title, in Columbia, September 21, 2008.*

Here are some games from the 2007 Invitational:

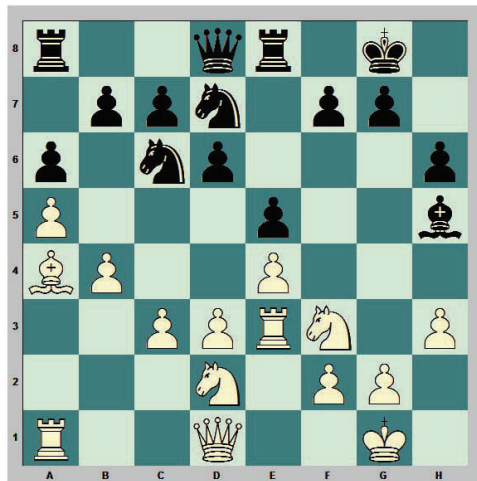
## Bishop's Opening

Missouri Invitational 2007

W: Ron Luther (2200)  
B: James Voelker (2107)

**1.e4 e5** Since I had somehow managed to escape bad positions in the 1st two rounds and Jim had drawn Holliman in round 2, winning this game would put me in the driver's seat, needing only a draw in the last 2 games to at least tie for 1st. **2.Bc4** The Bishop's Opening is a good choice for

those who either don't want to study all the lines of say the Ruy Lopez, Petroff, etc. or want to have some control over how the game will continue. **2...Nf6 3.d3 Nc6** [3...c6] **4.Nf3 Be7** [4...Bc5] **5.0-0 0-0** *Time 1:54 each* [5...d6 6.a4 Be6 7.Na3 0-0 8.Re1 h6 9.c3 Bg4?! 10.h3 Bh5 11.Nc2 Re8 12.Ne3 Bf8 13.a5! This guy will be a thorn in Black's side 13...a6 14.g4 Bg6 15.b4 White is in complete control 15...Nd7 16.Kg2 Be7 17.Nd5 Nf8 18.b5 axb5 19.Bxb5 Ne6 20.Be3 Rf8 21.a6! Nb8 22.a7 Nd7 23.Bxd7 Qxd7 24.Qa4 Rfd8 25.Reb1 b6 26.Kh2 Nc5 27.Bxc5 dxc5 28.Qxd7 Rxd7 29.Kg2 Bd6 30.Nd2 Bf8 31.Nc4 Rxd5 32.exd5 Bxd3 33.Nxb6 cxb6 34.Rxb6 Be4+ 35.f3 Bxd5 36.Rd1 Be6 37.Ra1 Bd5 38.Rb8 e4 39.Rxa8 Bxa8 40.Rb1 Bd6 41.Rb8+ 1-0 R. Luther-S.Dowd Heart Of America Class 2003] **6.Re1 Re8 7.a4 h6** If Black doesn't find a way to play d5



Position after 16. Re3

he will have a passive Ruy Lopez position **8.a5!?** [8.c3] **8...Bb4?!** [8...a6] **9.Bd2 Bxd2 10.Nbxd2 d6** *Time White 1:48 Black 1:38* **11.c3 Be6 12.Bb5 a6 13.Ba4 Bg4 14.h3 Bh5 15.b4 Nd7** *Time white 1:41 black 1:19* **16.Re3** (diagram left) The start of a long range plan based on the lack of dark squared bishops **16...Qe7 17.Qf1! Na7?!** [17...Nd8] **18.g4 Bg6 19.Qg2 c6 20.Rae1 Nf8** *Time white: 1:20 black :54* **21.Qg3 Bh7 22.Nh4 g6 23.Ndf3** Whites pieces hurry to the Black king-side before he can figure out how to untangle **23...Kh8 24.g5! hxg5 25.Nxg5 f6 26.Nxh7 Kxh7** Here I saw Nf5 (Showed this to Jim in the post mortem) but decided to take no chances [26...Qxh7 27.Qg4 Qh5 28.Qxh5+ gxh5 29.Nf5 Rad8 30.Bd1±] **27.Kh2 Rad8** *Time white 1:13 black :36* **28.Nf5!** (diagram opposite page) **Qe6** [28...gxf5 29.Rg1 Ng6 30.Qxg6+ Kh8 31.Qh6+ Qh7 32.Qxf6+ Qg7 33.Qxg7#] **29.Rg1 Rd7 30.Qh4+ Kg8 31.Nh6+ Kh7 32.Ng4+ Kg7 33.Rf3** Something that I teach to my students is that if you can attack a king with 10 or more points than he can defend with after sacrificing, the game should be over. **33...Rf7 34.Bb3!!** Almost all combinations involve either removing a defender, a double attack, or a combination of both **34...d5 35.exd5 cxd5**

Time white :47 black :11 36.Bxd5 Qxd5 37.Qh6+ Kg8 38.Nxf6+ Rxf6 39.Rxf6 Qxd3 40.Rgxf6+ My Fritz program likes Rg4 1-0

Because of the win in the 3rd round, my main goal was to not lose either of the final two games. Henceforth my choice of opening versus Nate in round four.

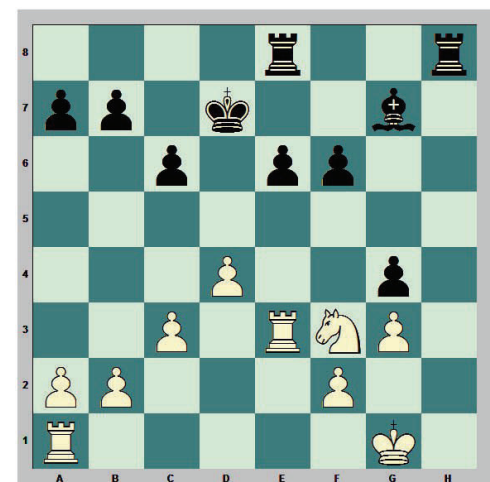
**Bishop's Opening**

Missouri Invitational 2007

W: Nathan Swinger (1822)

B: Ron Luther (2200)

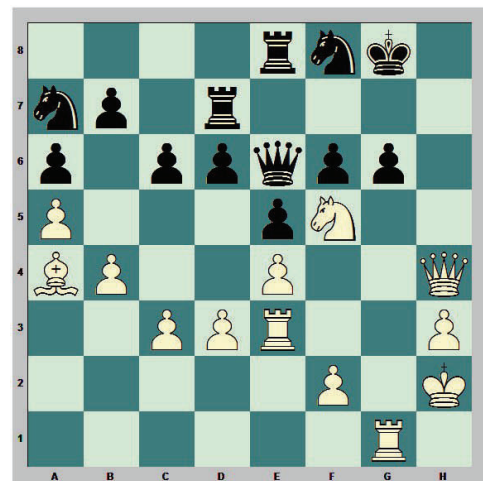
1.e4 d5 2.exd5 Qxd5 [2...Nf6] 3.Nf3 Nf6 4.d4 Bg4 5.Be2 e6 6.Bf4 [6.0-0] 6...c6 7.0-0 Nbd7 8.Qd3?! Qf5 9.Qxf5 Bxf5 10.c3 h6 11.Nbd2 g5 This is a common theme after the Queens are exchanged. 12.Bg3 Nh5 13.Be5 Nxe5



Position after 20...Rae8

14.Nxe5 Nf4 15.Bg4 Bxg4 16.Nxg4 Bg7 17.Nc4 h5! 18.Nge5 f6 19.Nf3 Kd7 20.Rfe1 Rae8 (Diagram left)

Black has a pleasant game and can improve his position slowly 21.g3 Nd5 22.Re2 h4 23.Ne3 Nxe3 24.Rxe3 hxg3 25.hxg3 g4 Black continues to fix whites pawns on dark squares for later 26.Nh4 Bh6 27.Re4 f5 28.Re2 Rhg8 29.Kg2 Bg5 30.Rh1 Re7 31.f4 White is getting desperate for play 31...Bf6 32.Kg1 Rh7 33.Ng2 Rh3 34.Re3 Rxb1+ 35.Kxb1 b6 36.Kg1 c5 37.dxc5 bxc5 38.b3 a5 [38...Rc8] 39.a4 c4?! [39...Rb8!] 40.bxc4 Rb8 41.Rd3+ Kc6 42.Ne3 Rd8?! [42...Rb1+!] 43.Rxd8 Bxd8 44.Nc2 Kc5 45.Nd4 Kxc4 46.Nxe6 Bf6 47.Kf2 Bxc3 48.Ke2 Bf6 49.Kd2 Kd5?! [49...Kb4] 50.Nc7+ Kc6 51.Nb5 Kc5 52.Kd3 Bb2 53.Kc2 Bd4 54.Nxd4 Kxd4 55.Kd2 Kc4 56.Kc2 Kb4 57.Kd3 Kxa4 58.Kc4 Ka3 59.Kc3 a4 White Resigns. 0-1



28 Nf5!!, The Knight is hanging, but can't be taken for some time.

# Top Winners of the Missouri State Title

John Ragan	12	1948, 1953, 1956, 1957, 1958, 1959, 1961, 1970, 1972, 1974, 1975, 1977
Michael A. Brooks	11	1981, 1985, 1987, 1988, 1990, 1991, 1992, 1993, 1994, 1995, 2003
Ronald G. Luther	9	1993, 1997, 1998, 1999, 2002, 2003, 2006, 2007, 2008
Kenneth E. Jones	8	1976, 1979, 1984, 1985, 1986, 1989, 1993, 2003
Robert H. Steinmeyer	5	1942, 1947, 1950, 1954, 1958
Elliot Winslow	5	1969, 1972, 1973, 1974, 1975
Doug Eckert	5	1983, 1985, 1986, 1990, 2003
Robert M. Jacobs	5	1974, 1993, 1995, 1996, 2004
Bob Holliman	4	1998, 2003, 2004, 2005
James R. Voelker	4	1994, 1998, 2004, 2005



Certain years numerous players tied for the state title in which case the winner on tie breaks was awarded the plaque; however, all players tied for 1st place were considered to be State Co-Champions.

For the complete history of Missouri State Champions, please visit <http://www.jimvoelker.com/statech.html>



# Highlights of Chess History

## Highlights of Chess History

### Part II

~ Bart F. Gibbons ~

International Correspondence Master

It was in the early 19th century that the first chess clubs, chess magazines, and chess columns appeared. England and France led the way; a Liverpool newspaper ran a chess column in 1813, while the first chess magazine (*Le Palamede*) was published in France in 1836.

The legendary chess club *Café de la Regence* of Paris is where many of the chess greats of both the 18th and 19th centuries played, including Philidor, Deschappelles, La Bourdonnais, McDonnell, Saint Amant, Staunton, Kieseritzky, Anderssen, Harrwitz, Steinitz, and Morphy.

The love of the game brought patrons, spectators and players together there, and many amusing anecdotes still remain. Keep in mind that chess clocks did not come along until the later 19th century, and it was not uncommon for players to think for two hours on one move. Frustrated by the slow play, chess master and noted historian Henry Buckle said to an opponent “ Sir, the slowness of genius is hard to bear, but the slowness of mediocrity is insufferable.”

The top players in the first half of the 1800's were also from England and France. Following the death of Philidor in 1795, Deschappelles became the leading French player for twenty years. Deschappelles played mostly odds games, and was also the teacher of the great La Bourdonnais.

Here's an odds game played in Paris; remove Black's f-pawn, and White makes the first two moves.

#### Exhibition Game—Pawn Odds

Paris, France

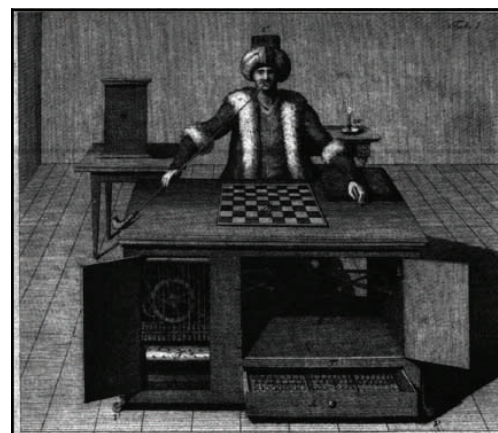
W: J. Cochrane

B: A. Deschappelles

1.e4—2.d4 e6 3.f4 d5 4.e5 c5 5.c3 Nc6 6.Nf3 cxd4 7.cxd4 Qb6 8.Nc3 Bd7  
9.a3 Nh6 10.h3 Nf5 11.Ne2 Be7 12.g4 Bh4+ 13.Nxh4 Nxh4 14.Kf2 0-0  
15.Kg3 Ng6 16.b4 a5 17.Bd2 axb4 18.Bxb4 Nxb4 19.axb4 Qxb4 20.Rb1  
Ra3+ 21.Kh2 Qe7 22.Rxb7 Qh4! 23.Rxd7 Qf2+ 24.Bg2 Rxh3+ 25.Kxh3  
Qh4#.

In 1834, La Bourdonnais won a famous match against the Irish player McDonnell. However, in 1843 Englishman Howard Staunton defeated Saint-Amant of France. This gave Staunton the “bragging rights” to the top player in the world (both La Bourdonnais and McDonnell were deceased by this time). My next article will cover these matches in more detail.

The popular growth of chess in these early years was aided by the exhibitions of *The Turk*, an ingenious invention touted as an automaton chess-playing machine.



*Kempelen's famous "Chess Turk"*

The Turk was exhibited off and on for 84 years, beginning in 1770, which was the year it was constructed by Wolfgang Von Kempelen (a brilliant man who perfected embossed printing for the blind, and contributed to the fields of hydraulics and engineering). The exhibitions would begin with Kempelen opening the drawers and cabinets, permitting the audience to peer inside. The Turk would then begin play as White. If the Turk placed his opponent in check, he would nod his head three times.

If the opponent made an illegal move, the Turk would shake his head, and move the piece back. The Turk could also do the difficult knight's tour ( moving a knight so that it would touch every square only once), and was generally victorious in competition (among his victims were Napoleon Bonaparte, Frederick the Great, and Benjamin Franklin). In addition, the Turk would communicate in English, French and German with spectators using a letter board. In later years the Turk was able to say "Echec!" (check, in French).

The cabinet measured 3,5 feet long, 2 feet wide, and 2 feet high. The chess board was 18 inches square. A human being inside controlled the parts and levers. The inside of the machine was built to mislead. Clock-like gears were visible on the left side, and you could see through if the back doors were open. Additional interior doors continued the illusion that you could see everything.

Part of the illusion was that the clock-like gears did not go all the way to the back. The human operator was able to sit on a sliding seat, moving out of sight when the exhibitor opened various doors. Dummy machinery would come into place when the seat slid, further camouflaging the operator. The chess pieces had magnets, so that underneath the board a similar magnet's attraction allowed the operator to see where the pieces were moved.



*The Café de la Regence in the 19th century*

In all fifteen different people operated the Turk, including Jacques Moret (a nephew of Philidor), William Lewis (a British champion), William Schumberger (St. Amant's teacher), and Johann Allgaier. The first exhibit in America ( New York 1826) was operated by a French woman. The exhibit was so popular in Philadelphia that it led to the creation of the first chess club there.

If you are interested in reading more about the Turk, there's ample material. Many writers published theories, but it wasn't until after the Turk's destruction in a fire in 1854 that the exact methods were explained. Modern authors have documented the Turk's story, and a computer-operated replica was built in the 1980s.

The Turk had two notable successors; Mephisto, and Ajeeb.

## **Mid-America Open: March 13-15, 2009**

**\*\*WorldChessLive Grand Prix Point Event—100 Enhanced GPP\*\***

**5SS, 40/2, SD/1** (2-day option, rds 1-2 G/70), Crowne Plaza Hotel, Clayton. 7750 Carondelet Ave., St. Louis MO 63105. **\$\$ 20,000 b/250 paid entries** (re-entries, unrs in U1200-U2000, count as half, U900 Section one quarter), minimum \$16,000 (80% of each prize) guaranteed. In 7 sections: Open: \$2000-1000-600-400, clear winner or 1st on tiebreak \$100 bonus, top U2300 \$900, U2200 \$800, U2100/Unr \$700. FIDE. Under 2000: \$1500-700-400-300. Under 1800: \$1500-700-400-300. Under 1600: \$1500-700-400-300. Under 1400: \$1200-600-300-200. Under 1200: \$1200-600-300-200. Under 900: \$100-600-40, trophies to top 7. Unrated may enter any section, with prize limits: U900 \$50, U1200 \$150, U1400 \$300, U1600 \$400, U1800 \$500, U2000 \$700. Balance goes to next player(s) in line. **EF**: 3-day \$103, 2-day \$102 mailed by 3/5, all \$105 online at chesstour.com by 3/10, \$110 phoned to 406-896-2038 by 3/10 (entry only, no questions), \$120 at site. Under 900/Unr Section EF: 3-day \$23, 2-day \$22 if mailed by 3/5, \$25 online at chesstour.com by 3/10, \$27 phoned to 406-896-2038 by 3/10, \$30 at site. **FREE TO UNRATED IN U900 OR U1200 SECTIONS**. Re-entry \$60; not available in Open Section. No checks at site, credit cards OK. MCA membership. (\$5; higher with printed magazine) required for MO residents. 3-day schedule: **Reg ends Fri 6 pm**, rds Fri 7 pm, Sat 11-6, Sun 9-3:15. 2-day schedule: Reg ends Sat 10 am, rds Sat 11-2:30-6, Sun 9-3:15. Byes: OK all; must commit before rd 3, having under 2 pts. **HR**: \$87-87, 888-303-1746, 314-726-5400, request chess rate, reserve by 2/27 or rate may increase. **Ent**: Continental Chess, Box 249, Salisbury Mills NY 12577. Questions: 845-496-9658.



# Future Tournaments

## **November 8—Saint Louis Classical Swiss 2—St. Louis**

Chess Club & Scholastic Center of Saint Louis 4657 Maryland, Saint Louis, Missouri 63108.  
MCA membership required (available on-site from \$5). 4SS, 40/2 SD/1, EF: \$60, \$40 for annual members of the club. Free entry for any GM, IM, WGM, or WIM. \$\$GTD \$2,300: \$500 1st and \$200 2nd overall, \$200/\$100 1st/2nd ea. A, B, C, D, U1200. \$50 1st Unrated. \$50 perfect score. Reg: 9:00 - 9:50. Rds: 10am, 4:30pm, Sunday 9am, 3:30pm. One 1/2 pt bye if declared before rd 1. Ent: PO Box 4641, St. Louis, MO 63108 Info: 314-361-CHESS. [info@saintlouischessclub.org](mailto:info@saintlouischessclub.org), or [www.saintlouischessclub.org](http://www.saintlouischessclub.org).

## **November 8, 2008 - November in Farmington—Farmington**

Memorial United Methodist Church 425 North St, Farmington, MO. Details at [jeffersoncitychess.googlepages.com/nexttournament](http://jeffersoncitychess.googlepages.com/nexttournament). Contact Mike Clark at 573-896-5139.

## **November 15, 2008 - Springfield Saturday Tournament—Springfield**

## **November 16, 2008 - Springfield Sunday Tournament—Springfield**

2215 South Fremont Ave., Springfield, MO 65804-3101.

Details at [jeffersoncitychess.googlepages.com/nexttournament](http://jeffersoncitychess.googlepages.com/nexttournament). Contact Mike Clark at 573-896-5139.

## **November 22, 2008 Saint Louis Swiss 6—St. Louis**

4SS, G/60, Chess Club & Scholastic Center, 4657 Maryland Ave. St. Louis MO 63108. EF: \$30, \$20 for annual members of the club. MCA Membership Req'd from \$5. OSA. \$\$GTD \$750: \$175 1st/2nd in each M/X, A, B, C, D, U1200. \$100/\$25. Reg: 8:30 - 9:00. Rds: 9:15, 11:15, 2:45, 4:45. 1/2 point bye if declared before round 1. Ent: PO Box 4641, St. Louis, MO 63108, 314-361-CHESS. Info: [info@saintlouischessclub.org](mailto:info@saintlouischessclub.org) or [www.saintlouischessclub.org](http://www.saintlouischessclub.org).

## **November 29, 2008—Thanks for Chess—St. Louis**

5SS G/60 Chess Club & Scholastic Center, 4657 Maryland Ave. St. Louis MO 63108 3 sections (U1300, 1300-1700, 1700+) - only play those in your section. USCF membership required. Dual rated. EF: \$30 by 11/22/2008. \$35 on site. Site entries cash only. One 1/2 pt bye available if declared before rd 1. Unrated players play in bottom section, eligible for unrated prize, and not counted for based-on prizes. Prizes: \$200-\$90-\$30 b/15 per section. Unrated- \$50. Reg: 8:00-8:50. Rds: 9, 11:15, 1:45, 4:15, 6:45. Send entries to Isaiah Angeli 4611 Starview Dr. St. Louis MO 63128. Info: Matt Angeli at [mja.inc@gmail.com](mailto:mja.inc@gmail.com) or 314-315-0222.

## **December 6, 2008—St. Louis Swiss 7**

4SS, G/90, Chess Club & Scholastic Center, 4657 Maryland Ave. St. Louis MO 63108. EF: \$35, \$25 for annual members of the club. MCA Membership Req'd from \$5. OSA. \$\$GTD \$1,200: \$175 1st in each M/X, A, B, C, D, U1200. \$50 1st Unrated. Reg: 8:00 - 8:50. Rds: 9, 12:30, 3:45, 7. 1/2 point bye if declared before round 1. Ent: PO Box 4641, St. Louis, MO 63108, 314-361-CHESS. Info: [info@saintlouischessclub.org](mailto:info@saintlouischessclub.org) or [www.saintlouischessclub.org](http://www.saintlouischessclub.org).

## **December 20, 2008—St. Louis Swiss 8**

Chess Club And Scholastic Center Of Saint Louis, 4657 Maryland Ave. St. Louis MO 63108.  
See details for December 6, St. Louis Swiss 7

## **January 24 — Wilhelm Steinitz Open—Columbia**

3SS, G/75. Memorial Union room N208, 518 Hitt St., Columbia, MO. Directions: From I-70 exit 126, south on Providence, east on Rollins, north on Hitt. Entry fee: \$1, NO PRIZES-Just the satisfaction of playing well. Reg: 9:30-10:15. Rds: 10:30-1:15-4:00. Entries/Info: Charles Ward, 2400 Cimarron Drive, Columbia, MO 65203, 573-443-6685 <[czar8196@tranquility.net](mailto:czar8196@tranquility.net)>



### March 13-15 or 14-15—Mid-America Open—St. Louis

*Grand Prix Points: 100 (enhanced).* 5SS, 40/2, SD/1 (2-day option, rds 1-2 G/70), Crowne Plaza Hotel, Clayton. 7750 Carondelet Ave., St. Louis MO 63105 \$\$ 20,000 b/250 paid entries (re-entries count as half, U900 Section one quarter), minimum \$16,000 (80% of each prize) guaranteed. In 7 sections: Open: \$2000-1000-600-400, clear winner or 1st on tiebreak \$100 bonus, top U2300 \$900, U2200 \$800, U2100/Unr \$700. FIDE. Under 2000: \$1500-700-400-300. Under 1800: \$1500-700-400-300. Under 1600: \$1500-700-400-300. Under 1400: \$1200-600-300-200. Under 1200: \$1200-600-300-200. Under 900: \$100-60-40, trophies to top 7. Unrated may enter any section, with prize limits: U900 \$50, U1200 \$150, U1400 \$300, U1600 \$400, U1800 \$500, U2000 \$700. Balance goes to next player(s) in line. EF: 3-day \$103, 2-day \$102 mailed by 3/5, all \$105 online at chesstour.com by 3/10, \$110 phoned to 406-896-2038 by 3/10 (entry only, no questions), \$120 at site. Under 900/Unr Section EF: 3-day \$23, 2-day \$22 if mailed by 3/5, \$25 online at chesstour.com by 3/10, \$27 phoned to 406-896-2038 by 3/10, \$30 at site. FREE TO UNRATED IN U900 OR U1200 SECTIONS. Re-entry \$60; not available in Open Section. No checks at site, credit cards OK. MCA membership. (\$5; higher with printed magazine) required for MO residents. 3-day schedule: Reg ends Fri 6 pm, rds Fri 7 pm, Sat 11-6, Sun 9-3:15. 2-day schedule: Reg ends Sat 10 am, rds Sat 11-2:30-6, Sun 9-3:15. Byes: OK all; must commit before rd 3, having under 2 pts. HR: \$87-87, 888-303-1746, 314-726-5400, request chess rate, reserve by 2/27 or rate may increase. Ent: Continental Chess, Box 249, Salisbury Mills NY 12577. Questions: 845-496-9658. Advance entries posted at chesstour.com. WCL JGP.

# Scholastic Events

### GATEWAY CHESS LEAGUE SCHOLASTIC SCHEDULE:

November 8:	Gateway League Tournament	Westminster Christian Academy
December 6:	Gateway Board Tournament	Chaminade College Prep
January 10:	Gateway Team Tournament	Lindbergh High School
January 31:	Gateway Class Tournament	Lindbergh High School
February 7:	Gateway Action Tournament	Westminster Christian Academy
February 28:	State Scholastic Championship	Capitol Plaza Hotel
March 21:	Bollinger Memorial Tournament	Wydown Middle School

Visit <http://www.gatewaychess.org/> for more details.

**December 20th—Chrisman High School Tournament:** Bridger Middle School, Independence MO. Registration 8-9am, Round 1 9:30am, G/30 (rd 1&2 may be G/20) Entry Fee \$10. Sections— K-3, K-8, K-12 Trophies to top 3 in each sections, Medals to 4th-25th. Contact Bob Holliman: [chess\\_entries@comcast.net](mailto:chess_entries@comcast.net) (put Chrisman tournament in subject line) or 1-816-836-0568

**January 31st—Bridger Middle School Tournament:** Bridger Middle School, Independence MO. Registration 8-9am, Round 1 9:30am, G/30 (rd 1&2 may be G/20) Entry Fee \$10. Sections— K-3, K-8, K-12 Trophies to top 3 in each sections, Medals to 4th-25th. Contact Bob Holliman: [chess\\_entries@comcast.net](mailto:chess_entries@comcast.net) (put Bridger tournament in subject line) or 1-816-836-0568

### UPCOMING USCF NATIONAL SCHOLASTIC EVENTS:

**National Youth Action: November 7-9, Brownsville Texas**

See <http://main.uschess.org/tournaments/2008/nya/> for full details

**National K/12 Championship Tournament, December 12-14,2008, Lake Buena Vista Florida**

See <http://main.uschess.org/tournaments/2008/k12/> for full details

**Super Nationals IV, April 3-5, 2009 Nashville, Tennessee**

This is the only Spring National event in 2009. All grades and sections are played at the same location. Gaylord Opryland Resort and Convention Center, (615) 883-2211. Tournament details at [www.uschess.org](http://www.uschess.org)

# Regional Chess Clubs

## SAINT LOUIS AREA CLUBS :

**Indian Trails Branch Library:** Location: St. Louis County Library 8400 Delport Drive (314) 428-5424 Meets: Tuesdays 3:30 PM. Contact: any library employee

**Delmar Loop Chess Club:** Location: St. Louis Bread Company 6630 Delmar Ave. (U-City) Chess played every night 6-9pm Most players come on weekends. Contact: Joseph Garnier at <chessoholic@sbcglobal.net>

**Mid Rivers Mall Chess Club:** Location: Food Court, Mid Rivers Mall, Mid Rivers Mall Drive, St. Peters. Chess played every Saturday, 8am-noon. Contact: Luke Brodland at <kalomundi\_00@yahoo.com>

**Saint Louis Chess Club and Scholastic Center:** 4657 Maryland Ave. Saint Louis. For club information and tournament schedule, see <http://saintlouischessclub.org>, (314) 361-CHESS or contact Tony Rich, <trich@tonyrich.org>, Mon-closed, T-W 3-10pm, Th-F 3-11pm, Sat 12-11pm, Sun 12-10pm

**Saint Peters Chess Club:** Location: St. Peters. 235 Salt Lick Road, St. Peters. Meets: Friday nights starting at 6pm. Contact: Tim Nesham at <tim.nesham@gmail.com>

**Sunset Hills Parks & Recreation Activities Center:** 12450 West Watson Road, Thursday 10am-2pm. (314) 842-7265

## KANSAS CITY AREA CLUBS:

**Heart of America Chess Association:** Location: Noland Baptist Church 4505 S Noland Rd., Independence, MO 64055. Meets: Friday Nights 7-11pm. There are no fees or charges to play, this club is for the community. Contact: Bob Holliman at (816) 836-0568 or <chess\_entries@comcast.net>

**Kansas City (KS) Public Library:** Location: 625 Minnesota, Kansas City KS. Meets: Wednesdays 5:30-8:00 PM Contact: Brooke Leavitt at (913) 551-3280

**Rockhurst Community Chess Club:** Location: Rockhurst University Community Center, 5401 Troost Ave., Kansas City MO 64110 Saturdays 10:00am-1:00pm Contact: Alicia Douglas at (816) 501-4306

**The Chess Club:** Location: Vivion West Shopping Center (North KC) 2314 NW Vivion, Riverside MO 64150. Meets: Wed. Fri. Sat, 6:00-12:00 PM. Single visit \$5, Website: <http://www.powerpawn.net>

**Westport Chess Club:** Location: Westport Flea Market at 817 Westport Rd., Kansas City, MO 64111 (just east of the intersection of SW Trafficway and Westport Rd.) year-round basis. Tuesday's 6:30-11:00 PM \$2 fee adults, \$1 under 18 Contact: Bill Mendus <wmendus@swbell.net>

## CLUBS IN OTHER AREAS OF MISSOURI:

**Columbia -- University of Missouri Chess Club:** Location: Memorial Union (518 Hitt Street) Room S203 May-August: Lakota's Coffee, 24 S. Ninth St. Mondays 7-10pm. Contact: Charles Ward at <czar8196@tranquility.net> Website: <http://www.students.missouri.edu/~muchess>

**Jefferson City -- Jefferson City Chess Club:** Contact Tim Boyd—tboyd66@embarqmail.com or (573) 635-6299.

**Joplin -- Joplin Chess Club:** Contact Bart Gibbons—joplinchess@yahoo.com or (417) 396-0788.

**Mineral Area Chess Club:** Location: Tourist Center on the Mineral Area College Campus in Park Hills. Monday Nights from 7-9pm. Contact: James Lyon at (573) 756-6009, or by e-mail at <jaaalyon@sbcglobal.net>

**Rolla -- MS&T Chess Club:** Location: Havener Center, Walnut Room, 1346 N. Bishop Ave., Rolla, MO 65401. Meets: Wednesdays 7 PM. Student President: Thomas Rehmeier at <trrthf@mst.edu> Info: Selden Trimble at <strimble@rollanet.org>

**Springfield -- MO State University Chess Club:** Location: Plaster Student Union, room 317-A. Meeting hours: Mondays 7-10pm. Contact: Nick Beatty at <nbeatty@missouristate.edu> Website: <http://www.organizations.missouristate.edu/chess>

**Springfield -- Springfield Park Board Chess Club:** Location: Southside Senior Center 2215 S. Fremont Ave., Springfield, MO Meets: Friday 6:30 to 11PM USCF-rated events. Contact: Jim Baumlin at (417) 831-6585 Website: <http://www.geocities.com/SpringfieldChessClub>



# RECENT GAMES FROM MISSOURI CHESS PLAYERS

## B75: Sicilian Dragon—Yugoslav

2008 Invitational Championship

W: Ronald G. Luther (2205)

B: Darius Masuhud (1917)

1.e4 c5 2.Nf3 Nc6  
3.Nc3 g6 4.d4 cxd4  
5.Nxd4 Bg7 6.Be3  
d6 7.Qd2 a6 8.Be2

Bd7 9.0-0-0 Rc8 10.h4 h5 11.f3 Nf6 12.Kb1 Ne5  
13.Nd5 Nxd5 14.exd5 b5 15.Rde1 Nc4 16.Bxc4  
Rxc4 17.b3 Rc8 18.Bg5 0-0 19.Rxe7 Qb6 20.Be3  
Qd8 21.Bg5 Qb6 22.Rxd7 Bxd4 23.Rxd6 Qxd6  
24.Qxd4 f6 25.Bf4 Qd7 26.Qd3 Kf7 27.d6 Rfe8  
28.g4 Rc5 29.Rg1 hxg4 30.fxg4 Qe6 31.h5 Rg8  
32.hxg6+ Rxc6 33.d7 Rd5 34.d8Q Black resigns. 1-0

## D70: Grünfeld Defense

2008 Invitational Championship

W: Waldo Odak (2052)

B: Nathan Swinger (1893)

1.d4 d5 2.c4 c6  
3.e3 Nf6 4.Nf3 g6  
5.Be2 Bg7 6.0-0-0  
0 7.Ne5 Nbd7 8.f4

Ne4 9.Nc3 Ndf6 10.Bd2 Bf5 11.Rc1 e6 12.Be1 Nxc3  
13.Bxc3 dxc4 14.Bxc4 Nd5 15.Bd2 f6 16.Nf3 Re8  
17.b4 a6 18.a4 Qd7 19.Qe2 Be4 20.b5 cxb5 21.axb5  
a5 22.Bd3 Bxd3 23.Qxd3 b6 24.Rc6 f5 25.Rfc1 Rac8  
26.e4 Ne7 27.Rxb6 Rxc1+ 28.Bxc1 Qc7 29.Rc6  
Nxc6 30.Qc4 fxe4 31.Ne5 Bxe5 32.fxe5 Qb6  
33.bxc6 Qb4 34.Qe2 Qxd4+ 35.Be3 Qd3 36.Qe1 Rc8  
37.Qc1 Qb5 38.c7 a4 39.h3 Qxe5 40.Bf4 Qd4+  
41.Kh2 e5 42.Qc6 Rxc7 43.Qe8+ 1-0

## French Defense

STL Sweet Summer Swiss

W: Nathaniel Johnson (1116)

B: Josh Frank (1701)

1.e4 e6 2.d4 d5  
3.Nc3 Nf6 4.e5 Nfd7  
5.Nf3 c5 6.Be3 Nc6  
7.Bb5 cxd4 8.Bxd4

a6 9.Bxc6 bxc6 10.Ne2 c5 11.Be3 Be7 12.0-0 0-0  
13.Rc1 Bb7 14.Ng3 d4 15.Bf4 Bxf3 16.Qxf3 Bg5  
17.Bxg5 Qxg5 18.Ne4 Qxe5 19.Rfe1 Qd5 20.c4 dxc3  
21.Rxc3 Ne5 22.Qe2 Rac8 23.Rd1 Qxa2 24.Nd6 Rc6  
25.Qxe5 Rd8 26.Rcd3 Qa4 27.Nb7 0-1

## Slav Defense

STL Sweet Summer Swiss

W: Alexey Kazakevich (1527)

B: Brian Gadson (UNR)

1.d4 d5 2.Nf3 Bf5  
3.c4 c6 4.Nc3 e6  
5.e3 Nf6 6.Bd3 Ne4  
7.Bxe4 dxe4 8.Nd2

Bb4 9.a3 Bxc3 10.bxc3 Nd7 11.c5 Qg5 12.g3 Nf6  
13.f4 Qg4 14.Qxg4 Nxg4 15.Nc4 0-0 16.Rb1 b5  
17.cxb6 axb6 18.Rxb6 Rab8 19.a4 Rxb6 20.Nxb6  
Rb8 21.a5 Nf6 22.0-0 Nd5 23.Nxd5 exd5 24.Ba3 Bc8  
25.Bb4 Ba6 26.Rb1 Bc4 27.Rb2 Ba6 28.g4 f6 29.g5  
Kf7 30.h4 f5 31.h5 Ke6 32.Rg2 Bb5 33.Kh2 Ba6  
34.Kg3 Bf1 35.Rb2 Ba6 36.Kf2 Bc4 1/2-1/2

## Queen's Gambit Accepted

STL Sweet Summer Swiss

W: Doug Howe (1532)

B: John Wiedner (1156)

1.d4 d5 2.c4 dxc4  
3.Nc3 Nf6 4.e4 e6  
5.Bxc4 Bb4 6.Bg5  
0-0 7.e5 h6 8.Bxf6

gxf6 9.Qg4+ Kh7 10.Nf3 Rg8 11.Qe4+ f5 12.Qh4  
Nc6 13.Qxd8 Nxd8 14.0-0 c6 15.a3 Ba5 16.b4 Bc7  
17.Ne2 a5 18.Nf4 a4 19.Nh5 Rg6 20.Nh4 Rg5 21.  
Nf6+ Kh8 22.f4 Rg7 23.Rf3 b5 24.Be2 Bb6 25.Rh3  
Bxd4+ 26.Kf1 Bxa1 27.Nxf5 exf5 28.Rxh6+ 1-0

## Alekhine's Defense

STL Sweet Summer Swiss

W: Roger Schmidt (1322)

B: Al Howelett (1822)

1.e4 Nf6 2.Nc3 d5 3.  
e5 Ne4 4.Nf3 Bg4  
5.d3 Nxc3 6.bxc3 e6  
7.Be2 Be7 8.0-0 0-0

9.a4 c5 10.d4 Nc6 11.Be3 Qc7 12.Ne1 Bxe2 13.Qxe2  
cxd4 14.cxd4 Bb4 15.f4 Bc3 16.Nf3 Bxa1 17.Rxa1  
Nb4 18.Rc1 Na2 19.Ra1 Nc3 20.Qd3 Rac8 21.Nd2  
Qc6 22.Nb3 Nxa4 23.Nc5 Nxc5 24.dxc5 a6 25.g4 f6  
26. Bd4 fxe5 27.fxe5 Rf4 28.h3 Rcf8 29.Rf1 Rxf1+  
0-1

## Bird's Opening

STL Sweet Summer Swiss

W: Richard Horner (1437)

B: Dan Juengel (1906)

1.f4 d5 2.b3 Nf6  
3.Bb2 b6 4.Nf3 Bb7  
5.e3 Nbd7 6.d3 g6  
7.Nbd2 Bg7 8.Be2

0-0 9.c4 Ng4 10.Bxg7 Nxe3 11.Qc1 Kxg7 12.Qc3+  
Nf6 13.Rg1 d4 14.Nxd4 Nxg2+ 15.Kf2 Nxf4  
16.Nf5+ Kh8 17.Bg4 Qxd3 18.Rac1 gxf5 0-1

## Colle System

STL Sweet Summer Swiss

W: Thomas Rehmeier (1769)

B: William Nesham (1312)

1.d4 Nf6 2.Nf3 d5  
3.e3 Bf5 4.c4 c6  
5.cxd5 cxd5 6.Nc3  
Nc6 7.Bb5 a6 8.Ba4

b5 9.Bc2 Bg4 10. a3 e5 11.dxe5 Nxe5 12.Bb3 Nxf3+  
13.gxf3 Be6 14.Qd4 Rc8 15.Qa7 Qa5 16.Qd4 b4  
17.Ba4+ Kd8 18.axb4 Bxb4 19.Bd2 Bf5 20.0-0 Rc4  
21.Qe5 Bh3 22.Rfd1 d4 23.Qg3 dxc3 24. Bxc3+ Nd5  
25.Qxh3 Rc7 26.Bxb4 Qxb4 27. Rxd5+ Ke7 28.Qg3  
Rhc8 29.Qe5+ Kf8 30.Qd6+ Qxd6 1-0

## King's Gambit

STL Sweet Summer Swiss

W: Cesareo Rodriquez (1802)

B: Craig Hartmann (1119)

1.e4 e5 2.f4 Nc6  
3.Nf3 g6 4.fxe5 Bg7  
5.d4 Nge7 6.Bc4 d5  
7.exd6 Qxd6 8.c3

Bg4 9.Bxf7+ Kd7 10.e5 Bxf3 11.Qxf3 Raf8 12.exd6  
cxd6 13.d5 Ne5 14.Qh3+ Nf5 15.Be6+ Ke7 16.Bg5+  
Ke8 17.0-0 h6 18.Be3 Rf6 19.Bxf5 gxf5 20.Rxf5  
Rh8 21.Rxf6 Rxf6 22.Qc8+ Kf7 23.Qxb7+ Kg6  
24.Nd2 Ng4 25.Qxa7 h5 26.h3 Nxe3 27.Qxe3 Bh6  
28.Qg3+ Kf7 29.Rf1 Bxd2 30.Rxf6+ Kxf6 31.Qf2+  
1-0

Latvian Gambit  
STL Sweet Summer Swiss  
W: Ken West (1231)  
B: Dan Roberts (1754)

1.e4 e5 2.Nf3 f5  
3.Nc3 Nf6 4.Bc4  
fxe4 5.Ng5 d5 6.Bb3  
Bc5 7.Rf1 h6 8.Nh3

0-0 9.Ng1 Bg4 10.f3 Bh5 11.d3 exf3 12.Nxf3 c6  
13.Na4 Bd6 14.d4 e4 15.Qe2 Re8 16.Qf2 exf3+  
17.Be3 Ng4 18.Kd2 Nxf2 19.Rxf2 Rxe3 20.Kxe3  
Qg5+ 21.Kd3 Bg6+ 22.Kc3 Qe3# 0-1

Sicilian Defense  
STL Sweet Summer Swiss  
W: Bob Howe (1667)  
B: Howard Granok (1116)

1.e4 c5 2.Nf3 d6  
3.Bb5+ Bd7  
4.Bxd7+ Nxd7 5.0-0  
g6 6.c4 Ngf6 7.d3

Bg7 8.Nc3 0-0 9.Rb1 Nb6 10.Ne1 Qd7 11.f4 e6  
12.Nf3 Ne8 13.Ne2 e5 14.b3 f6 15.Ng3 Nc8 16.f5  
Ne7 17.Nh4 g5 18.Nf3 h6 19.Nh5 Bh8 20.h4 Ng7  
21.Nh2 Qe8 22.Nxf6+ Rxf6 23.Ng4 Nh5 24.hxg5  
hxg5 25.Nxf6+ Bxf6 26.Qg4 Kf8 27.Bxg5 Ng8  
28.Qh4 Qf7 29.Rf3 Ke7 30.Bxf6+ Nxf6 31.g4 Kd7  
32.g5 Qh5 33.Rh3 Qf7 34.gxf6 Nxf6 35.Rb2 Rg8+  
36.Rg2 Kc6 37.Rxg8 Qxg8+ 38.Rg3 Qd8 39.Rg6  
Qa5 40.Rxf6 Qxa2 41.Qe1 Qb2 42.Qd1 Qd4+  
43.Kg2 Qe3 44.Rg6 Qf4 45.Qf3 Qd2+ 46.Kh3 Qa5  
47.f6 Qd8 48.Qh5 Qc8+ 49.Kg3 Qe6 50.f7 Qe7  
51.Qf5 Qf8 52.Qe6 1-0

Modern Defense  
STL Sweet Summer Swiss  
W: Jialin Ding (1601)  
B: Isaiah Angeli (941)

1.e4 d6 2.d4 Nf6  
3.Bd3 g6 4.Ne2 Bg7  
5.f3 c5 6.Nbc3 cxd4  
7.Nxd4 Qb6 8.Nb3

Nc6 9.Qe2 0-0 10.Be3 Qc7 11.0-0 Nb4 12.Nd4 Nxd3  
13.Qxd3 Nd7 14.f4 Nc5 15.Qd2 e5 16.Ndb5 Qc6  
17.Qxd6 Qxd6 18.Nxd6 Na4 19.Nxa4 exf4 20.Bxf4  
Bd7 21.Nc3 f5 22.e5 b6 23.Rf2 Bc6 24.Rd1 Rad8  
25.Nd5 Bxd5 26.Rxd5 a6 27.Rfd2 h6 28.h4 g5  
29.hxg5 hxg5 30.Bxg5 f4 31.Bxd8 1-0

1.e4 c5 2.Nc3 Nc6 3.Nf3 g6 4.d3 Bg7 5.Be2 d6 6.h3  
Nf6 7.Be3 Qb6 8.Nd5 Nxd5 9.exd5 Nb4 10.c3 Nxd5  
11.d4 Nxe3 12.fxe3 Qxb2 13.Rb1 Qxc3+ 14.Kf2 0-0  
15.Bd3 cxd4 16.exd4 Bxd4+ 17.Nxd4 Qxd4+ 18.Ke1  
b6 19.Rf1 Bb7 20.g4 Rac8 21.Qe2 Rc3 22.Rd1 Qb4  
23.Qd2 a5 24.Be2 Rfc8 25.g5 Qh4+ 26.Rf2 Rxh3  
27.a4 Rh1+ 28.Bf1 Ba6 29.Qa2 Rxf1+ 30.Kd2 Qxf2#  
0-1

Pirc Defense  
STL Sweet Summer Swiss  
W: Lawrence Ridge (1447)  
B: Josh Frank (1991)

1.e4 d6 2.f4 Nf6  
3.Nc3 g6 4.Nf3 Bg7  
5.Bc4 0-0 6.d3 c6  
7.e5 Nd5 8.Ne4 Bg4

9.h3 Bxf3 10.gxf3 dxe5 11.fxe5 Bxe5 12.Bh6 Bxb2  
13.Bxf8 Bxa1 14.Qxa1 Qxf8 15.Qb2 Nb6 16.Bb3

N8d7 17.Ng5 e6 18.a3 Qg7 19.c3 Qe5+ 20.Ne4 Nc5  
21.Bc2 Nba4 22.Qb4 a5 23.d4 Nxe4 24.dxe5 axb4  
25.Bxe4 Nxc3 26.Kd2 Nxe4+ 27.fxe4 bxa3 28.Kc3  
a2 29.Ra1 g5 30.Kb3 h5 0-1

Caro-Kann Defense  
STL Sweet Summer Swiss  
W: Matthew Barrett (1825)  
B: Peter Harris (1389)

1.e4 c6 2.d3 d5  
3.Nf3 dxe4 4.dxe4  
Qxd1+ 5.Kxd1 Bg4  
6.Bf4 Nd7 7.Bd3

Ngf6 8.Ke2 e5 9.Bg3 Bc5 10.Nbd2 0-0-0 11.a4 Rhe8  
12.h3 Bxf3+ 13.Nxf3 h6 14.Rhf1 g6 15.Nd2 Nh5  
16.Bh2 Nf4+ 17.Bxf4 exf4 18.Nc4 Ne5 19.Nxe5  
Rxe5 20.Kf3 g5 21.h4 f6 22.hxg5 fxg5 23.Rh1 Rh8  
24.Rh2 Kd7 25.Bc4 Ke8 26.Rah1 Bf8 27.c3 Ke7  
28.Rd1 Bg7 29.Rhh1 Rd8 30.Rxd8 Kxd8 31.Rd1+  
Ke7 32.Bg8 Ra5 33.Bh7 Rxa4 34.Bf5 Ra2 35.Rd7+  
Kf6 36.Rxb7 Bf8 37.Kg4 Ra1 38.Rc7 Ra6 39.Bd7  
Bd6 40.Rxc6 Rxc6 41.Bxc6 Be5 42.Kf3 Ke7 43.Kg4  
Kf6 44.Be8 Bd6 45.Kf3 Ke7 46.Bh5 Be5 47.Ke2  
Kd6 48.Kd3 Kc5 49.Kc2 Kc4 50.Be2+ Kc5 51.b4+  
Kc6 52.Kb3 Kb6 53.Kc4 Kc6 54.Bd1 Kd6 55.b5 Bf6  
56.Kb4 Ke5 57.f3 Be7+ 58.Ka5 Bc5 59.Ka6 Bb6  
60.Kb7 Bc5 61.Kc6 Bb6 62.Bb3 h5 63.Bf7 h4 64.c4  
Kd4 65.Kd6 Bc5+ 66.Kc6 Bb6 67.e5 Kxe5 68.c5  
Bd8 69.b6 axb6 70.cxb6 Bxb6 71.Kxb6 Kd4 72.Kc6  
Ke3 73.Be6 Kf2 74.Bh3 Kg3 75.Kd5 Kf2 76.Ke5  
Kg3 77.Kf5 Kf2 78.Kxg5 Kg3 79.Kf5 Kf2 80.Kxf4  
Ke2 81.Kg4 Kd3 82.f4 Kd4 83.Kg5 Kd5 84.f5 Ke5  
85.f6 Kd6 86.Kg6 Ke5 87.f7 Ke4 88.f8Q 1-0

Scandinavian /Unusual lines  
STL Sweet Summer Swiss  
W: Steve Korenblat (1554)  
B: Thomas R. Rehmeier (1769)

1.e4 d5 2.d4 dxe4  
3.Nc3 Nf6 4.f3 exf3  
5.Nxf3 Bg4 6.Bc4  
e6 7.Be3 Bb4 8.0-0

0-0 9.Ne2 Nbd7 10.c3 Bd6 11.Qc2 c6 12.Nf4 Qc7  
13.Nd2 Nb6 14.h3 Nxc4 15.Nxc4 Bf5 16.Qf2 Ne4  
17.Qf3 Be7 18.g4 Ng5 19.Qg2 Be4 20.Qe2 Nxb3+  
21.Nxb3 Qg3+ 0-1

Scandinavian Defense  
STL Sweet Summer Swiss  
W: Shan Siddiqui (1612)  
B: Matthew Barrett (1825)

1.e4 Nc6 2.d4 d5  
3.exd5 Qxd5 4.Nf3  
Bg4 5.Be2 e5 6.Nc3  
Bb4 7.Bd2 Bxc3

8.Bxc3 e4 9.Nh4 Bxe2 10.Qxe2 Nge7 11.0-0 g5  
12.Nf5 Nxf5 13.f3 e3 14.g4 Nfe7 15.Qxe3 0-0-0  
16.Rae1 Rhe8 17.a4 Ng6 18.Qxe8 Rxe8 19.Rxe8+  
Kd7 20.Re4 Nh4 21.Re3 Nxd4 22.Rd3 c5 23.Bxd4  
cxd4 24.c3 Qb3 25.Rxd4+ Kc6 26.Rfd1 Nxf3+ 0-1

**Alapin Sicilian**

STL Sweet Summer Swiss

W: Bob Howe (1667)

B: Selden Trimble (1935)

1.e4 c5 2.Nf3 Nc6  
3.c3 d5 4.exd5 Qxd5  
5.d4 Bg4 6.Be2 e6  
7.Be3 cxd4 8.Bxd4Nxd4 9.Nxd4 Bxe2 10.Nxe2 Qxg2 11.Qa4+ Qc6  
12.Qxc6+ bxc6 13.Rg1 g6 14.Nd2 Ne7 15.0-0-0 Bh6  
16.Kc2 Nf5 17.Rg4 Ke7 18.Rc4 Rac8 19.Nd4 Nxd4+  
20.Rxd4 Rhd8 21.Nb3 Bg7 22.Ra4 Rxd1 23.Kxd1  
Rc7 24.Ra6 Be5 25.h3 Bd6 26.Ke2 Kd7 27.Nd4 e5  
28.Nf3 f5 29.Ra5 e4 30.Ne5+ Bxe5 31.Rxe5 Rb7  
32.b3 Rb5 33.Rxb5 cxb5 34.Ke3 g5 35.Kd4 Kd6  
36.c4 bxc4 37.bxc4 h5 38.c5+ Kc6 39.Ke5 g4  
40.hxg4 hxg4 41.Kd4 a5 42.a4 e3 43.Kxe3 Kxc5  
44.Kf4 Kb4 45.Kxf5 Kxa4 46.Kxg4 Kb5 47.f4 Kc6  
48.Kf3 a4 49.Ke4 a3 50.f5 a2 51.Ke5 Kd7 0-1**Dutch Defense**

STL Sweet Summer Swiss

W: Al Howlett (1822)

B: William Thompson (1559)

1.Nf3 d5 2.d4 e6  
3.c4 f5 4.Nc3 Nf6  
5.Bf4 Bd6 6.Bxd6  
Qxd6 7.e3 0-0 8.Bd3c5 9.0-0 Na6 10.a3 b6 11.Qe2 Nc7 12.Rfd1 Bb7  
13.Rac1 Rae8 14.Ne5 cxd4 15.exd4 Qe7 16.Nb5  
Nxb5 17.cxb5 Qd6 18.Rc2 Rc8 19.Rdcl Rxc2  
20.Rxc2 Rc8 21.Rxc8+ Bxc8 22.Qc2 Bb7 23.Qc3  
Ng4 24.Nxg4 fxg4 25.g3 Qd7 26.Qc2 h6 27.Be2 h5  
28.Qg6 Qf7 29.Qg5 Qf6 30.Qxh5 Qxd4 31.Qe8+  
Kh7 32.Qxe6 Qe4 33.Qxe4+ dxe4 34.Bxg4 Kg6  
35.h4 Kf6 36.Kf1 Ke5 37.Ke2 Kd4 38.Kd2 Bd5  
39.Bd7 Bb3 40.h5 Bf7 41.g4 Ke5 42.Ke3 Kd6  
43.Bc6 Be6 44.Kf4 Bd5 45.Bxd5 Kxd5 46.g5 1-0**Queen's Pawn Opening**

STL Sweet Summer Swiss

W: Stephen Zhang (1137)

B: Nate Noss (1361)

1.d4 c5 2.e3 d5 3.c4  
Nf6 4.Nc3 Bf5  
5.Nf3 e6 6.b3 Nc6  
7.Be2 Be7 8.0-0 0-09.Bb2 Qc7 10.Rc1 Rac8 11.Re1 Rfd8 12.Qd2 Bd6  
13.cxd5 exd5 14.Nb5 Qe7 15.dxc5 Bxc5 16.Bxf6  
gxf6 17.Red1 Bb4 18.Qb2 a6 19.a3 axb5 20.axb4  
Nxb4 21.Rxc8 Rxc8 22.Bxb5 Nc6 23.Rxd5 Be4  
24.Bxc6 Rxc6 25.Rd1 Bxf3 26.gxf3 Rb6 27.Rc1 Qe6  
28.Qd2 Rd6 29.Qc3 Rc6 30.Qb2 Kg7 31.Rd1 Qf5  
32.Qe2 Qe6 33.Qf1 Qf5 34.f4 Qg6+ 35.Kh1 f5  
36.Qh3 Kf8 37.Qh4 Rd6 38.Rc1 Rc6 39.Qd8+ Kg7  
40.Rg1 Rc1 41.Rxc1 Qe6 42.Rg1+ Kh6 43.Qh4# 1-0**King's Gambit**

STL Sweet Summer Swiss

W: Dan Roberts (1754)

B: Margaret Hua (1495)

1.e4 e5 2.f4 exf4  
3.Nf3 g5 4.Bc4 Bg7  
5.0-0 h6 6.d4 Nc6  
7.c3 Nge7 8.h4 Ng69.e5 0-0 10.Qd3 Nh8 11.hxg5 hxg5 12.Kf2 d5  
13.exd6 Qxd6 14.Nxg5 Qg6 15.Bxf4 Qxd3 16.Bxd3Ng6 17.Bxc7 Bd7 18.Nd2 Rac8 19.Bd6 Rfe8  
20.Rae1 Bh6 21.Ndf3 Rxe1 22.Rxe1 Re8 23.Ne4  
Bg7 24.Nfg5 Nce7 25.Nc5 Bc6 26.Bc4 Nh8  
27.Rxe7 Rxe7 28.Bxe7 Bh6 29.d5 Bxg5 30.Bxg5  
Be8 31.d6 Ng6 32.d7 Bxd7 33.Nxd7 b6 34.Bf6 Nf8  
35.Nxf8 Kxf8 36.Ke3 a5 37.b4 axb4 38.cxb4 Ke8  
39.a4 Kf8 40.a5 bxa5 41.bxa5 Ke8 42.Bb5+ Kf8  
43.Ba6 Kg8 44.Bd3 Kf8 45.a6 Ke8 46.Bf5 Kf8  
47.a7 Ke8 48.a8Q# 1-0**Czech Benoni**

STL Sweet Summer Swiss

W: William Tong (1701)

B: Kevin Johnson (2024)

1.d4 Nf6 2.c4 e5  
3.dxc5 g6 4.Nc3  
Qa5 5.Be3 Bg7  
6.Qd2 Na6 7.a3Ng4 8.Bd4 e5 9.Be3 Nxe3 10.Qxe3 0-0 11.Nf3  
Qxc5 12.Qxc5 Nxc5 13.e4 b6 14.b4 Nb3 15.Rb1  
Nd4 16.Nxd4 exd4 17.Nd5 Bb7 18.f3 Bxd5 19.cxd5  
Rac8 20.Bb5 Rfd8 21.0-0 Rc3 22.a4 Bh6 23.f4 Re3  
24.e5 g5 25.fxg5 Bxg5 26.Rf5 Bh6 27.Bc4 Rc8  
28.Bb5 Rc2 29.Rbf1 d3 30.Rxf7 d2 31.Bxd7 Re1  
32.Be6 Be3+ 33.Kh1 d1Q 34.Rf8+ Kg7 35.R8f7+  
Kg6 36.R7f6+ Kh5 37.Bf7+ Kg5 38.R6f5+ Kh6  
39.Rh5+ Kg7 40.Rg5+ Bxg5 0-1**Giucco Piano**

STL Sweet Summer Swiss

W: Craig Hartmann (1303)

B: Isaac Brodsky (854)

1.e4 e5 2.Nf3 Nc6  
3.Bc4 Bc5 4.d3 h6  
5.Nc3 Nf6 6.Qe2 d6  
7.Be3 a6 8.0-0-0 0-09.d4 exd4 10.Nxd4 Nxd4 11.Bxd4 Bxd4 12.Rxd4  
c5 13.Rd3 b5 14.Bd5 Nxd5 15.Rxd5 Bb7 16.Rd2  
Re8 17.Qf3 b4 18.Nd5 a5 19.Re1 a4 20.a3 bxa3  
21.bxa3 Qa5 22.c3 Bxd5 23.Kd1 Bc4 24.Rb2 Bb3+  
25.Ke2 Rab8 26.Reb1 Bc4+ 27.Kd1 Rxb2 28.Rxb2  
Bb3+ 29.Ke2 Rb8 30.Ke3 Qxc3+ 31.Kf4 Qxb2  
32.Qh3 Qxf2+ 33.Qf3 Qxf3+ 34.gxf3 c4 35.Kf5  
Rb5+ 0-1**King's Indian**

STL Sweet Summer Swiss

W: Josh Frank (1991)

B: Dennis Humphries (1734)

1.Nf3 d5 2.d3 c5  
3.g3 Nc6 4.Bg2 e6  
5.0-0 g6 6.Nbd2  
Bg7 7.e4 Nge78.Re1 0-0 9.e5 Qc7 10.Qe2 b6 11.h4 Bb7 12.c3  
Rad8 13.Nf1 d4 14.c4 Nb8 15.Bf4 a5 16.N1h2 h5  
17.g4 hxg4 18.Nxg4 Kh8 19.h5 gxh5 20.Nf6 Ng6  
21.Bg5 Rc8 22.Nh4 Bxf6 23.Bxf6+ Kg8 24.Qxh5 1-0

The Missouri Chess Bulletin Needs Games!!

*Submit your latest over the board masterpiece (or any other interesting battle) to [bdhowe@yahoo.com](mailto:bdhowe@yahoo.com).*

## Board of Director Meeting Summary:

The MCA Board of Directors met on September 14<sup>th</sup>, 2008 at Memorial Union, in Columbia Missouri. Members present: Ed Baur, Thomas Rehmeier, Bob Howe, Ron Luther, Bob Holliman, Tim Campbell, and John Sutton. Absent: Bill Wright & John Weidner. The next meeting was set for Saturday December 13<sup>th</sup>, at 2pm.

Officers for 08-09 were elected. Thomas Rehmeier was elected President, John Sutton as Vice President, Bill Wright as Treasurer, and John Weidner as Secretary. Nathaniel Fast will take over as Membership Chair.

There were two nominations for the Missouri Chess Hall of Fame, Jack Winters and Max Judd. After discussion, neither received a motion and second needed for inclusion. There was interest in finding out further information about Max Judd and then reconsidering his nomination, as well as interest in gathering information on John Ragan of St. Louis.

New Business: A number of suggestions for changes to the MCA were considered.

Bob Holliman suggested the expansion of the terms directors serve. He suggested staggered terms of three years.

Ron Luther presented a list of eight suggestions he would like to see done. These included a Mission statement, Code of Conduct, Transparency of the MCA board, Junior

memberships, a Bidding Process for events, Introducing Scholastic players to the MCA, an MCA Player of the Year award, and a Scholarship Program. Ron will present a proposed Mission statement to the board at the next meeting to start this process.

Different ideas for how to run the Invitational Championship were discussed. The board tentatively approved switching to a Swiss tournament format, where players 15-20 players would earn invitations to play in the event.

Invitations could be earned through the traditional tournaments, plus any director which runs a tournament that follows the approved standards can also send it's winner to the State championship. Large events would qualify to send several players. The event would also invite special participants such as the Denker and Polgar winners, recent state champions, and players rated as Masters and above. The hope is this format gets more players interested in participating in events and more directors participating in the championship cycle.

Bob Holliman supplied a handout on ideas for the MCA to consider, including forming a sub-committee to handle scholastic events and to create a transparent bidding process. This was given out to review and consider at a future meeting, so was not yet discussed.

All members are invited and encouraged to give their comments or thoughts on these proposals to their Board of Directors representatives before the next meeting on December 13<sup>th</sup>.

### MCB MATERIAL SUBMISSIONS

The MCB is Missouri's Official Chess Publication, for and by the members of the Missouri Chess Association. Your help providing material for the MCB will be greatly appreciated. Please see the Material Submission Methods below.

All submissions become the property of the MCA and the MCA reserves the right to edit any and all material received for publication. **All contributions that are true, fair, and that build goodwill and better friendships among the membership will be published. Thanks so much to all those who have contributed.**

Please send material for the MCB, including but not limited to:

- Annotated games and/or scoresheets.
- Articles written by members
- Tournament reports
- Outside articles (with permission to reprint)
- Pictures (with captions please)
- Historical items
- Chess related quotes, sayings, cartoons, jokes, etc.

#### **SUBMISSION METHODS:**

The first preference is to please email articles or content to [bdhowe@yahoo.com](mailto:bdhowe@yahoo.com), ready to use in the MCB. When submitting games, please use PGN format if you are able to do so. For those without Chessbase, other formats can be used, including Chessmaster.cmg, or as a text file. Articles can also be sent via ground mail, please contact the editor to make arrangements. Please e-mail [bdhowe@yahoo.com](mailto:bdhowe@yahoo.com) or call 636-234-7928 with any questions.

*\*Submission Deadline for the Winter 2009 Missouri Chess Bulletin is January 15\**

# Missouri State Champions



**9-Time Missouri State Champion**  
Life Master Ronald G. Luther



**MO Open Champion**  
LM Bob Holliman

## 2008 Class Champions

**Master/Exp** Ronald G. Luther  
Kevin Dale Johnson

**Class A** Daniel R. Huff

**Class B** Timothy C. Nesham

**Class C** Cody B. Ruggles

**Class D** Tim V. Campbell  
Stephen G. Easton

**Class E** Austin Madenwald

**Novice** Ashwath S. Kumar



**Denker Champion**  
Frank H. Smith



**Reserve Champion**  
Jialin Ding

**HS Championship Team**  
Parkway Central High School  
(Second in a row)



**Polgar Champion**  
Joanna Gossell



**Quick Champion**  
Kevin Cao



**Blitz Champion**  
LM Ronald Luther



**Bughouse Champions**  
Kevin & Henry Cao

For a complete history of Missouri Champions, visit [www.mochess.org](http://www.mochess.org) & click the Champions Link.

# Missouri Chess Hall of Fame



*Mr. James H. Davies*  
*Inducted: 2000*



*Mr. Donald Oswald*  
*Inducted: 2001*



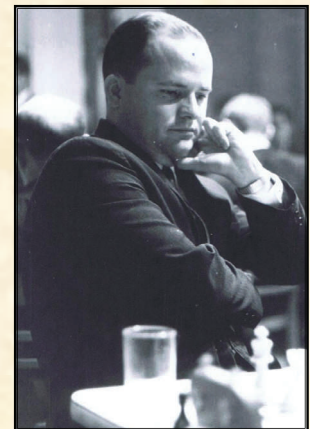
*Mr. Robert M. Jacobs*  
*Inducted: 2002*



*Mr. Michael A. Brooks*  
*Inducted: 2003*

*Chess, like any creative activity,  
can exist only through the combined  
efforts of those who have creative  
talent, and those who have the  
ability to organize their creative  
work.*

*-Mikhail Botvinnik*



*Mr. Robert H. Steinmeyer*  
*Inducted: 2006*



---

**Missouri Chess Association**  
**Bulletin Editor**  
4403 Gage Place  
Columbia, MO 65203